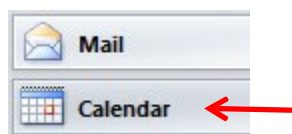


# Texas Woman's University Academic Calendar

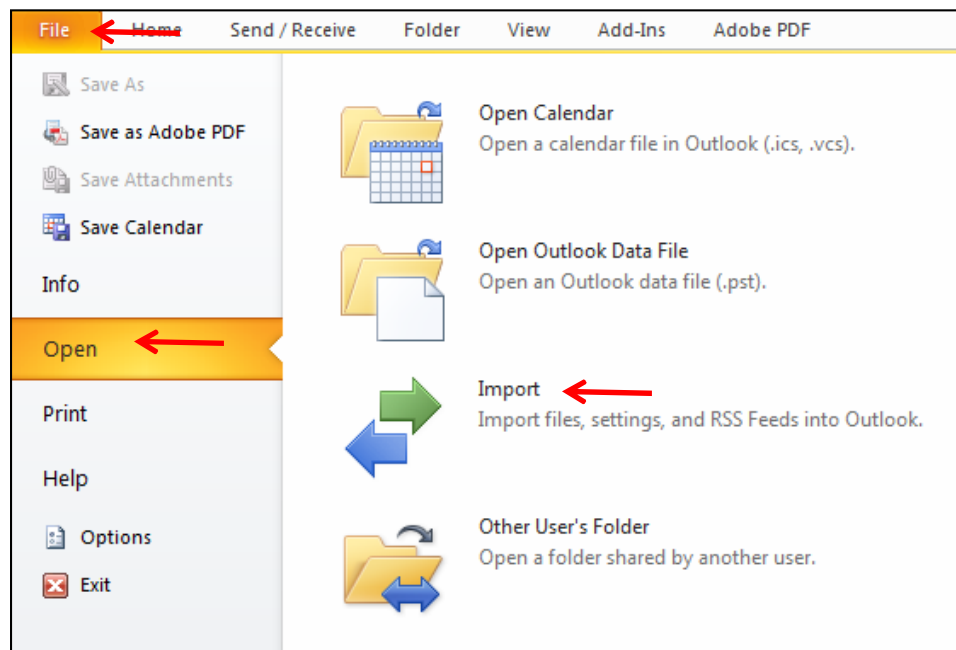
## CSV Upload to Outlook Calendar Instructions



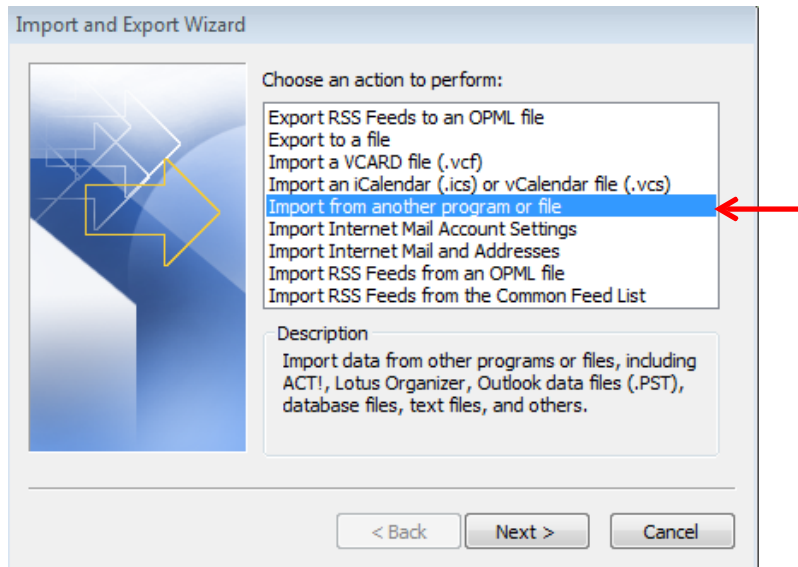
1. Go to the Academic Calendars page on the Registrar website:  
<https://www.twu.edu/registrar/academic-calendars/>
2. Select hyperlink to the CSV version of the academic calendar to be uploaded from the website and open file.
3. Choose "Save As"
4. Choose a location and save the file to your computer or network folder (desktop would work well for this purpose). *You will need to remember the name of the file and the location where it was saved for the next step.*
5. Select close
6. Open Outlook
7. Click on Calendar



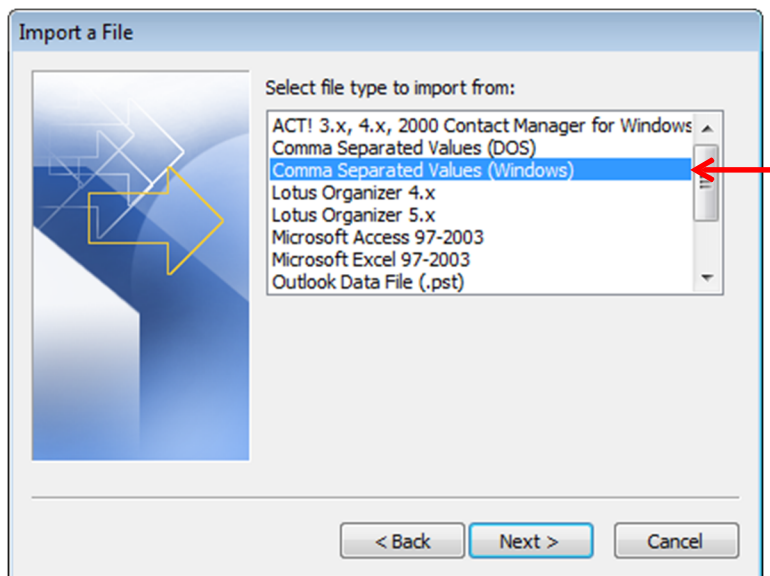
8. Choose File > Open > Import



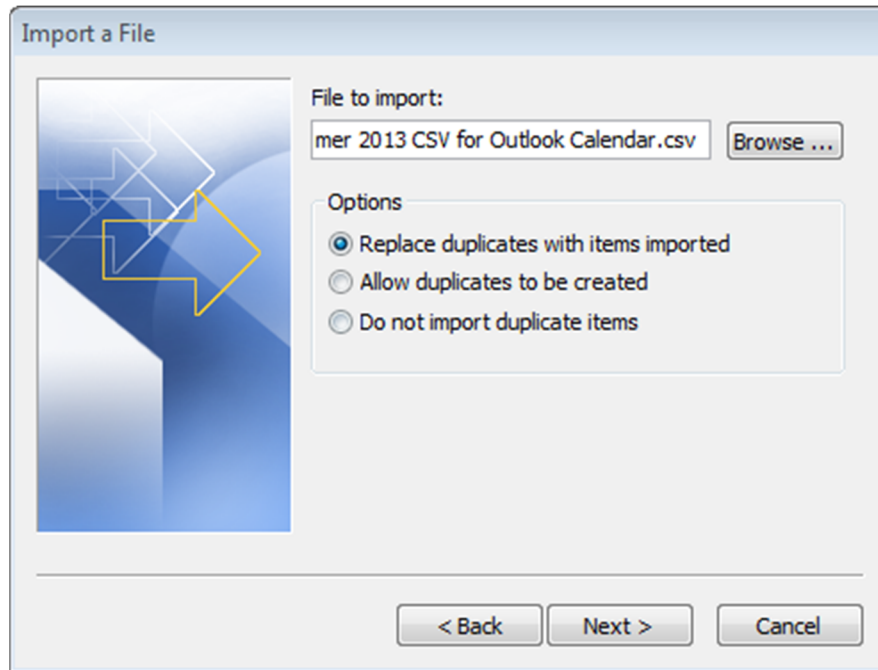
9. The Import and Export Wizard window will then appear. Choose “Import from another program or file” and click “Next”.



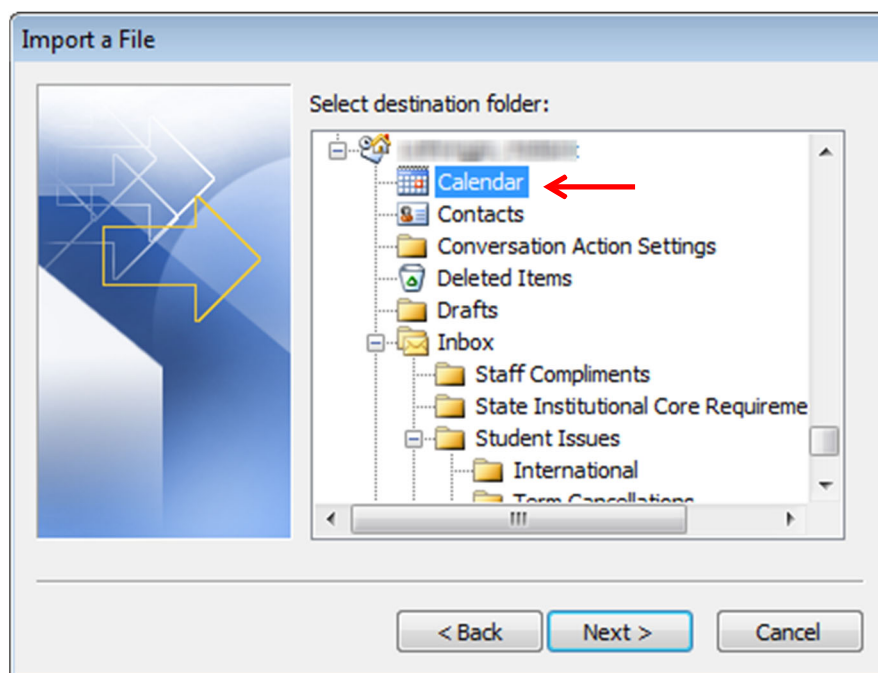
10. For the file type to import, select “Comma Separated Values (Windows)” and click “Next”.



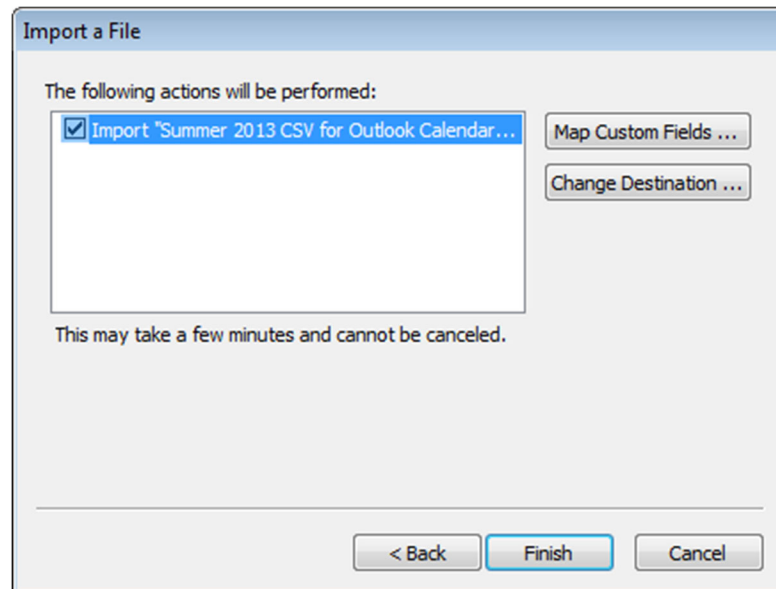
11. Click “Browse” to go to the location where you saved the .csv file in step #4 above and select the file. For the “Options”, it will default to allow duplicates. For the first time the file is uploaded, this is fine. However, if changes occur and you decide to upload a newer version of the file later, you will want to choose the “Replace duplicates...” option. Click “Next”.



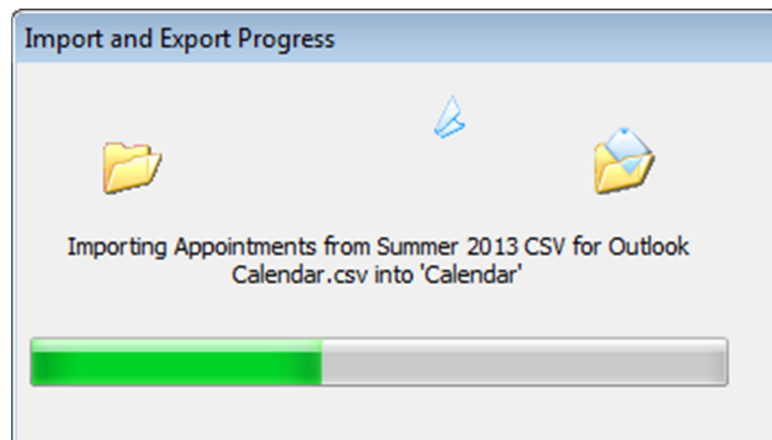
12. At the next window, click on the Calendar option, and then click “Next”



13. Check “Import...” and then click “Finish”. For the academic calendar .csv file, there is no need to map custom fields since all entries will be saved as all day events, showing as free, and with no alert.



14. A progress window will then appear. When the upload is complete, it will disappear and the items will now be saved as all-day items on your Outlook calendar.



**NOTE:** Any system interruption to Outlook which may occur during the upload will result in an error message appearing. If this happens, it is most likely just a coincidental timing issue that the interruption occurred during the upload. Simply attempt the process again. Odds are it will not occur a second consecutive time.

Once uploaded, the academic calendar items will appear on your Outlook calendar as all-day appointments. Click on the appointment to get a more detailed description.

