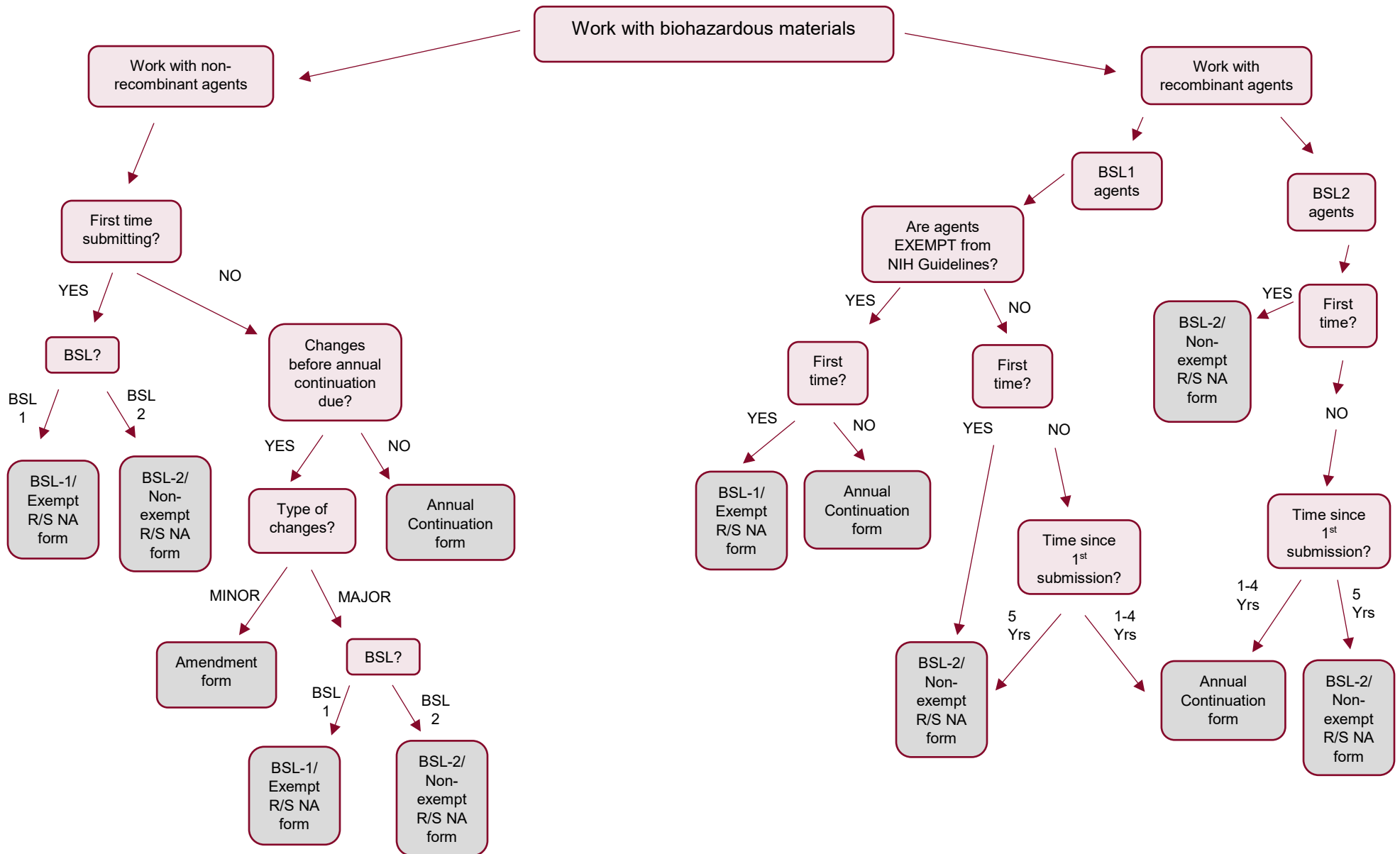


Use the following flowchart to determine which form you need to submit to the IBC. If more than one apply, select the one with the *highest containment level*. Note: "First time" means this is the initial declaration of work to IBC; "Full form submittal" means either the full BSL-1/Exempt R/S NA form or BSL-2/Non-exempt R/S NA form

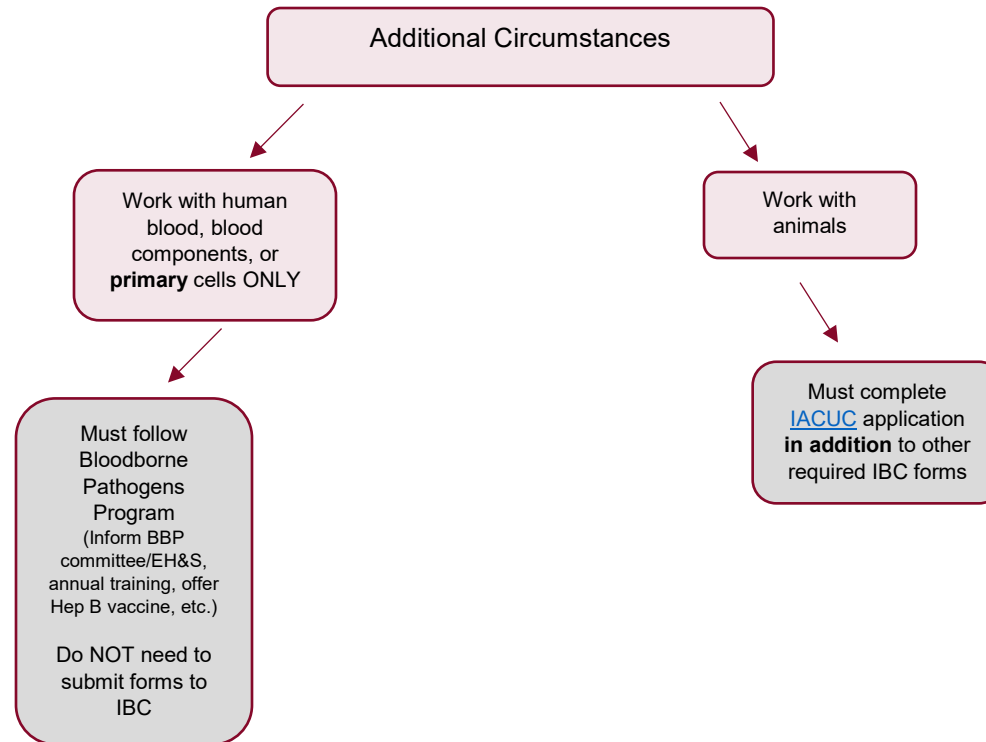
"Recombinant DNA or Synthetic Nucleic Acid (R/S NA)" means research joining natural or synthetic DNA/RNA segments outside the cell that can then be introduced and replicated in a living cell and includes derivatives that occur upon replication.



*Exemptions are listed as a summary on the BSL-1 & BSL-1 Exempt R/S NA Biosafety Review Form, however you can review https://osp.od.nih.gov/wp-content/uploads/NIH_Guidelines.pdf for detailed information on specific NIH Guideline exemptions

Use the following flowchart to determine which form you need to submit to the IBC. If more than one apply, select the one with the *highest containment level*. Note: "First time" means this is the initial declaration of work to IBC; "Full form submittal" means either the full BSL-1/Exempt R/S NA form or BSL-2/Non-exempt R/S NA form

"Recombinant DNA or Synthetic Nucleic Acid (R/S NA)" means research joining natural or synthetic DNA/RNA segments outside the cell that can then be introduced and replicated in a living cell and includes derivatives that occur upon replication.



*Exemptions are listed as a summary on the BSL-1 & BSL-1 Exempt R/S NA Biosafety Review Form, however you can review https://osp.od.nih.gov/wp-content/uploads/NIH_Guidelines.pdf for detailed information on specific NIH Guideline exemptions