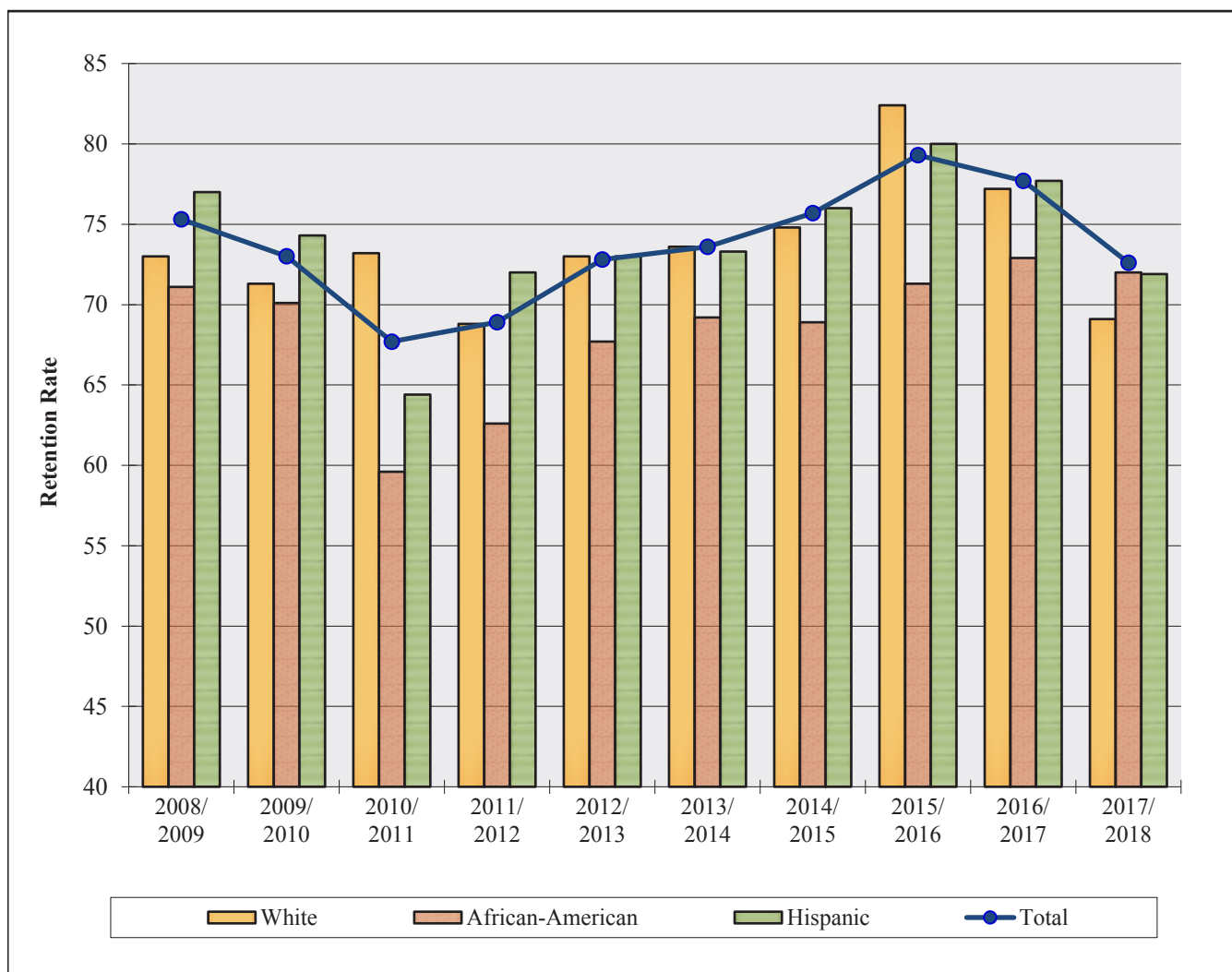


# Table of Contents

<b>Retention &amp; Graduation.....</b>	<b>E-1</b>
FTIC Freshmen One-year Retention Rates Chart	
Fall Semesters, 2008/2009 through 2017/2018 .....	E-2
FTIC Freshmen Six-year Graduation Rates Chart	
Fall Semesters, 2003/2009 through 2012/2018 .....	E-3
FTIC Freshmen Five-year Graduation Rates Chart	
Fall Semesters, 2004/2009 through 2013/2018 .....	E-4
FTIC Freshmen Four-year Graduation Rates Chart	
Fall Semesters, 2005/2009 through 2014/2018 .....	E-5
FTIC Freshmen Retention and Graduation Tables	
Fall 2010 through Fall 2012 Cohorts.....	E-6
Fall 2013 through Fall 2015 Cohorts.....	E-7
Fall 2016 through Fall 2018 Cohorts.....	E-8
FTIC Freshmen Six-Year Retention and Graduation Chart	
Fall Semester Total Cohorts, 2010 through 2012 .....	E-9
Fall Semester Cohorts by Ethnicity, 2012 .....	E-10
Transfer Students Four-year Graduation Rates Chart	
Fall Semesters, 2005/2009 through 2014/2018 .....	E-11
Transfer Students Three-year Graduation Rates Chart	
Fall Semesters, 2006/2009 through 2015/2018 .....	E-12
Transfer Students Two-year Graduation Rates Chart	
Fall Semesters, 2007/2009 through 2016/2018 .....	E-13
Transfer Retention and Graduation Tables	
Fall 2013 through Fall 2015 Cohorts.....	E-14
Fall 2016 through Fall 2018 Cohorts.....	E-15
Transfer Four-Year Retention and Graduation Chart	
Fall Semester Total Cohorts, 2012 through 2014 .....	E-16
Fall Semester Cohorts by Ethnicity, 2014 .....	E-17
Master's Level New Admits Retention and Graduation Tables	
2012-13 through 2014-15 Cohorts .....	E-18
2015-16 through 2017-18 Cohorts .....	E-19
Master's Level New Admits Four-Year Retention and Graduation Chart	
Total Cohorts, 2011-12 through 2013-14 .....	E-20
Total Cohorts by Ethnicity, 2013-14.....	E-21

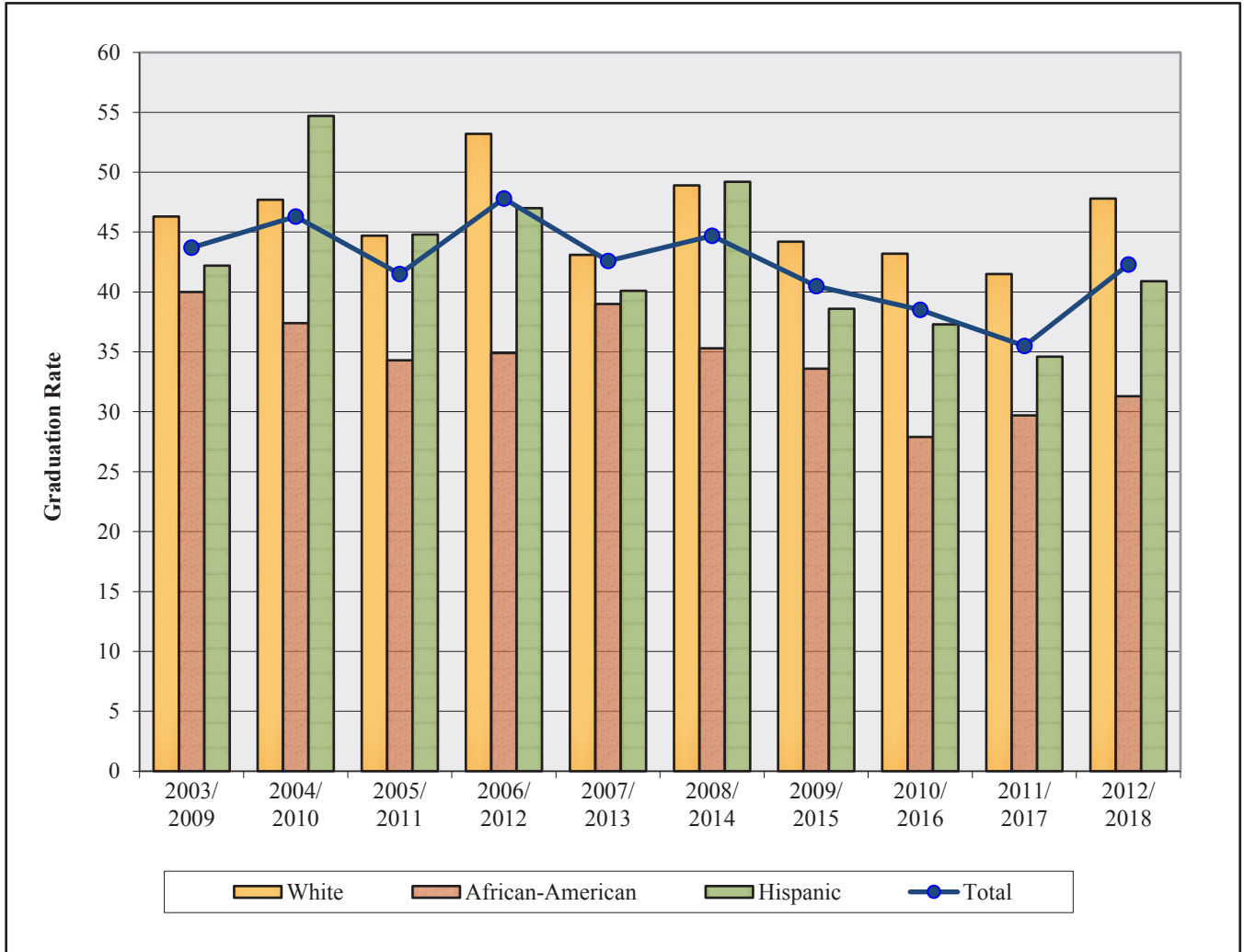
**FTIC One-year Retention Rates Chart**  
**Full-time Degree-seeking Freshmen by Ethnicity**  
**Fall Semesters, 2008/2009 through 2017/2018**



FTIC Freshmen One-year Retention											
Category		2008/ 2009	2009/ 2010	2010/ 2011	2011/ 2012	2012/ 2013	2013/ 2014	2014/ 2015	2015/ 2016	2016/ 2017	2017/ 2018
<b>White</b>	Cohort	282	251	257	260	341	333	326	289	324	353
	Rate	73.0	71.3	73.2	68.8	73.0	73.6	74.8	82.4	77.2	69.1
<b>African-American</b>	Cohort	218	211	272	337	300	295	273	275	277	232
	Rate	71.1	70.1	59.6	62.6	67.7	69.2	68.9	71.3	72.9	72.0
<b>Hispanic</b>	Cohort	183	171	303	332	389	371	384	435	507	491
	Rate	77.0	74.3	64.4	72.0	73.0	73.3	76.0	80.0	77.7	71.9
<b>Total</b>	Cohort	765	723	947	1,059	1,166	1,151	1,150	1,132	1,278	1,243
	Rate	75.3	73.0	67.7	68.9	72.8	73.6	75.7	79.3	77.7	72.6

Note: Cohort includes first-time-in-college, full-time, degree-seeking freshmen. Rate is defined as the number of students who graduated divided by the number of students in the initial cohort.

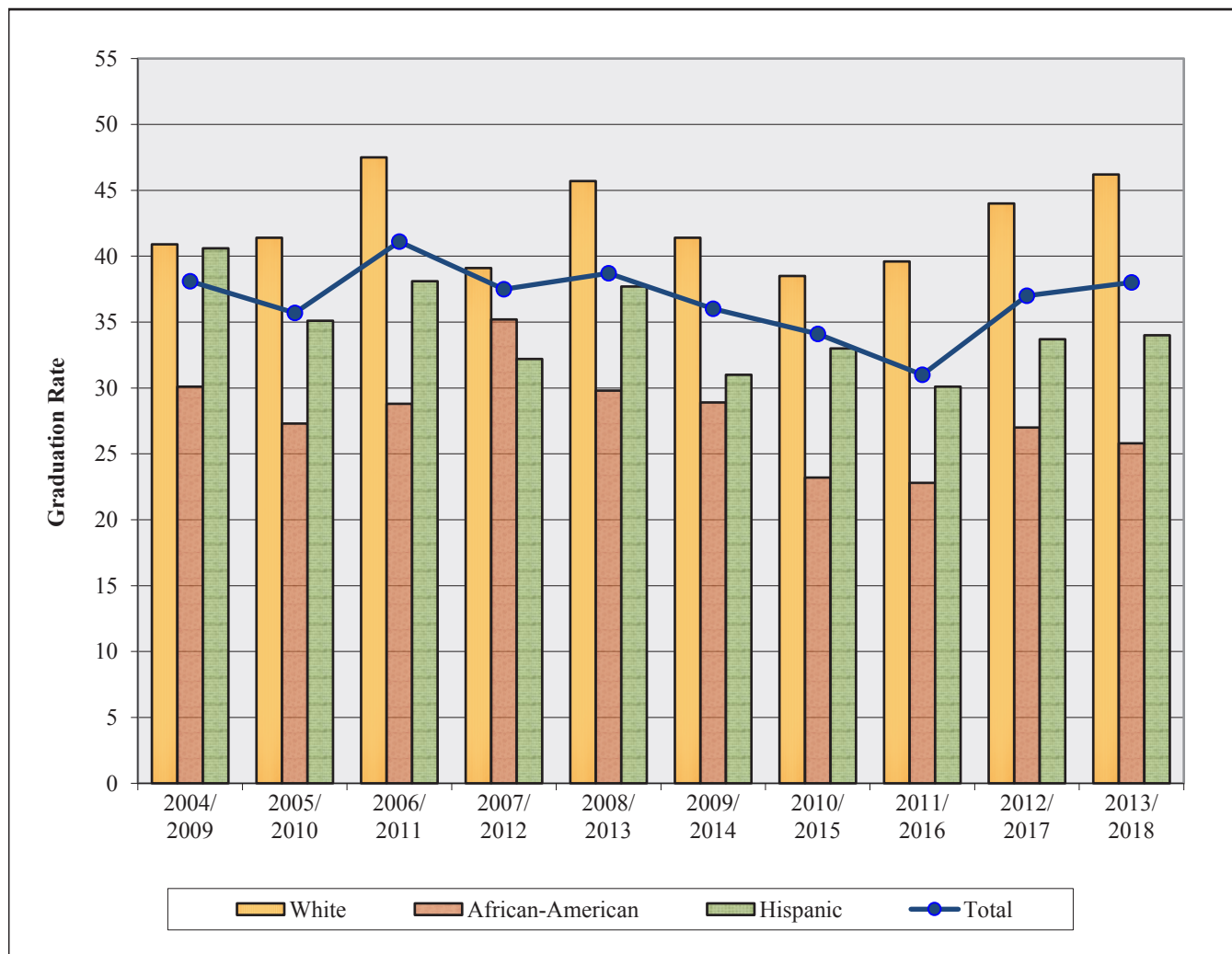
**FTIC Six-year Graduation Rates Chart**  
**Full-time Degree-seeking Freshmen by Ethnicity**  
**Fall Semesters, 2003/2009 through 2012/2018**



		Six-year Graduation									
Category		2003/ 2009	2004/ 2010	2005/ 2011	2006/ 2012	2007/ 2013	2008/ 2014	2009/ 2015	2010/ 2016	2011/ 2017	2012/ 2018
<b>White</b>	Cohort	281	281	295	316	299	282	251	257	260	341
	Rate	46.3	47.7	44.7	53.2	43.1	48.9	44.2	43.2	41.5	47.8
<b>African-American</b>	Cohort	160	163	198	215	210	218	211	272	337	300
	Rate	40.0	37.4	34.3	34.9	39.0	35.3	33.6	27.9	29.7	31.3
<b>Hispanic</b>	Cohort	102	128	134	168	177	183	171	303	332	389
	Rate	42.2	54.7	44.8	47.0	40.1	49.2	38.6	37.3	34.6	40.9
<b>Total</b>	Cohort	591	633	689	793	763	764	723	947	1,059	1,166
	Rate	43.7	46.3	41.5	47.8	42.6	44.7	40.5	38.5	35.5	42.3

Note: Cohort includes first-time-in-college, full-time, degree-seeking freshmen. Rate is defined as the number of students who graduated divided by the number of students in the initial cohort.

**FTIC Five-year Graduation Rates Chart**  
**Full-time Degree-seeking Freshmen by Ethnicity**  
**Fall Semesters, 2004/2009 through 2013/2018**



		<b>Five-year Graduation</b>									
<b>Category</b>		<b>2004/ 2009</b>	<b>2005/ 2010</b>	<b>2006/ 2011</b>	<b>2007/ 2012</b>	<b>2008/ 2013</b>	<b>2009/ 2014</b>	<b>2010/ 2015</b>	<b>2011/ 2016</b>	<b>2012/ 2017</b>	<b>2013/ 2018</b>
<b>White</b>	Cohort Rate	281 40.9	295 41.4	316 47.5	299 39.1	282 45.7	251 41.4	257 38.5	260 39.6	341 44.0	333 46.2
<b>African-American</b>	Cohort Rate	163 30.1	198 27.3	215 28.8	210 35.2	218 29.8	211 28.9	272 23.2	337 22.8	300 27.0	295 25.8
<b>Hispanic</b>	Cohort Rate	128 40.6	134 35.1	168 38.1	177 32.2	183 37.7	171 31.0	303 33.0	332 30.1	389 33.7	371 34.0
<b>Total</b>	Cohort Rate	633 38.1	689 35.7	793 41.1	763 37.5	764 38.7	723 36.0	947 34.1	1,059 31.0	1,166 37.0	1,151 38.0

Note: Cohort includes first-time-in-college, full-time, degree-seeking freshmen. Rate is defined as the number of students who graduated divided by the number of students in the initial cohort.

**FTIC Four-year Graduation Rates Chart**  
**Full-time Degree-seeking Freshmen by Ethnicity**  
**Fall Semesters, 2005/2009 through 2014/2018**



		Four-year Graduation									
Category		2005/ 2009	2006/ 2010	2007/ 2011	2008/ 2012	2009/ 2013	2010/ 2014	2011/ 2015	2012/ 2016	2013/ 2017	2014/ 2018
<b>White</b>	Cohort	295	316	299	282	251	257	260	341	333	326
	<b>Rate</b>	<b>25.4</b>	<b>30.7</b>	<b>27.4</b>	<b>31.9</b>	<b>26.7</b>	<b>28.8</b>	<b>28.1</b>	<b>31.7</b>	<b>30.6</b>	<b>35.6</b>
<b>African-American</b>	Cohort	198	215	210	218	211	272	337	300	295	273
	<b>Rate</b>	<b>10.6</b>	<b>16.3</b>	<b>18.1</b>	<b>17.9</b>	<b>14.7</b>	<b>10.7</b>	<b>9.8</b>	<b>13.0</b>	<b>11.2</b>	<b>11.4</b>
<b>Hispanic</b>	Cohort	134	168	177	183	171	303	332	389	371	384
	<b>Rate</b>	<b>14.9</b>	<b>16.1</b>	<b>16.4</b>	<b>19.7</b>	<b>13.5</b>	<b>18.2</b>	<b>17.5</b>	<b>17.2</b>	<b>18.9</b>	<b>21.9</b>
<b>Total</b>	Cohort	689	793	763	764	723	947	1,059	1,166	1,151	1,150
	<b>Rate</b>	<b>18.9</b>	<b>22.8</b>	<b>23.3</b>	<b>24.1</b>	<b>20.9</b>	<b>20.8</b>	<b>18.7</b>	<b>21.8</b>	<b>22.3</b>	<b>25.9</b>

Note: Cohort includes first-time-in-college, full-time, degree-seeking freshmen. Rate is defined as the number of students who graduated divided by the number of students in the initial cohort.

**FTIC Retention and Graduation Tables**  
**Full-time Degree-seeking Freshmen by Ethnicity**  
**Fall 2010 through Fall 2012 Cohorts**

<b>Fall 2010</b> <b>Retention</b>	<b>Cohort</b> <b>Base</b>	<b>After 1 yr.</b>		<b>After 2 yrs.</b>		<b>After 3 yrs.</b>		<b>After 4 yrs.</b>		<b>After 5 yrs.</b>		<b>After 6 yrs.</b>		<b>After 7 yrs.</b>	
		<b>#</b>	<b>%</b>	<b>#</b>	<b>%</b>	<b>#</b>	<b>%</b>	<b>#</b>	<b>%</b>	<b>#</b>	<b>%</b>	<b>#</b>	<b>%</b>	<b>#</b>	<b>%</b>
White	257	188	73.2	147	57.2	130	50.6	59	23.0	31	12.1	18	7.0	8	3.1
African-American	272	162	59.6	127	46.7	100	36.8	64	23.5	31	11.4	12	4.4	8	2.9
Hispanic	303	195	64.4	164	54.1	133	43.9	75	24.8	29	9.6	17	5.6	12	4.0
AS/PI	96	81	84.4	68	70.8	54	56.3	19	19.8	5	5.2	3	3.1	2	2.1
AI/AN	9	6	66.7	6	66.7	3	33.3	5	55.6	3	33.3	1	11.1	1	11.1
Int'l	6	5	83.3	5	83.3	6	100.0	3	50.0	0	0.0	0	0.0	0	0.0
<b>Total</b>	<b>947</b>	<b>641</b>	<b>67.7</b>	<b>521</b>	<b>55.0</b>	<b>428</b>	<b>45.2</b>	<b>225</b>	<b>23.8</b>	<b>99</b>	<b>10.5</b>	<b>51</b>	<b>5.4</b>	<b>31</b>	<b>3.3</b>
<b>Graduation</b>															
White						7	2.7	74	28.8	99	38.5	111	43.2	122	47.5
African-American						0	0.0	29	10.7	63	23.2	76	27.9	82	30.1
Hispanic						5	1.7	55	18.2	100	33.0	113	37.3	116	38.3
AS/PI						2	2.1	35	36.5	52	54.2	53	55.2	56	58.3
AI/AN						0	0.0	0	0.0	2	22.2	4	44.4	4	44.4
Int'l						0	0.0	3	50.0	4	66.7	5	83.3	5	83.3
<b>Total</b>						<b>15</b>	<b>1.6</b>	<b>199</b>	<b>21.0</b>	<b>323</b>	<b>34.1</b>	<b>365</b>	<b>38.5</b>	<b>388</b>	<b>41.0</b>
<b>Fall 2011</b>															
<b>Retention</b>	<b>Cohort</b> <b>Base</b>	<b>After 1 yr.</b>		<b>After 2 yrs.</b>		<b>After 3 yrs.</b>		<b>After 4 yrs.</b>		<b>After 5 yrs.</b>		<b>After 6 yrs.</b>		<b>After 7 yrs.</b>	
White	260	179	68.8	144	55.4	115	44.2	42	16.2	15	5.8	15	5.8	7	2.7
African-American	337	211	62.6	156	46.3	134	39.8	92	27.3	38	11.3	13	3.9	6	1.8
Hispanic	332	239	72.0	184	55.4	146	44.0	82	24.7	30	9.0	18	5.4	8	2.4
AS/PI	107	87	81.3	62	57.9	54	50.5	23	21.5	9	8.4	4	3.7	2	1.9
AI/AN	13	10	76.9	9	69.2	6	46.2	2	15.4	0	0.0	0	0.0	0	0.0
Other	5	0	0.0	0	0.0	0	0.0	0	0.0	0	0.0	0	0.0	0	0.0
<b>Total</b>	<b>1,059</b>	<b>730</b>	<b>68.9</b>	<b>558</b>	<b>52.7</b>	<b>456</b>	<b>43.1</b>	<b>241</b>	<b>22.8</b>	<b>92</b>	<b>8.7</b>	<b>50</b>	<b>4.7</b>	<b>23</b>	<b>2.2</b>
<b>Graduation</b>															
White						6	2.3	73	28.1	103	39.6	108	41.5	114	43.8
African-American						2	0.6	33	9.8	77	22.8	100	29.7	107	31.8
Hispanic						2	0.6	58	17.5	100	30.1	115	34.6	128	38.6
AS/PI						1	0.9	27	25.2	39	36.4	44	41.1	47	43.9
AI/AN						1	0.9	5	38.5	7	53.8	7	53.8	7	53.8
Other						0	0.0	0	0.0	0	0.0	0	0.0	0	0.0
<b>Total</b>						<b>13</b>	<b>1.2</b>	<b>198</b>	<b>18.7</b>	<b>328</b>	<b>31.0</b>	<b>376</b>	<b>35.5</b>	<b>405</b>	<b>38.2</b>
<b>Fall 2012</b>															
<b>Retention</b>	<b>Cohort</b> <b>Base</b>	<b>After 1 yr.</b>		<b>After 2 yrs.</b>		<b>After 3 yrs.</b>		<b>After 4 yrs.</b>		<b>After 5 yrs.</b>		<b>After 6 yrs.</b>			
White	341	249	73.0	196	57.5	159	46.6	67	19.6	23	6.7	10	2.9		
African-American	300	203	67.7	140	46.7	122	40.7	83	27.7	26	8.7	14	4.7		
Hispanic	389	284	73.0	226	58.1	188	48.3	116	29.8	45	11.6	15	3.9		
AS/PI	114	99	86.8	73	64.0	67	58.8	35	30.7	10	8.8	3	2.6		
AI/AN	13	9	69.2	9	69.2	8	61.5	3	23.1	0	0.0	0	0.0		
Other	6	3	50.0	2	33.3	2	33.3	1	16.7	0	0.0	0	0.0		
<b>Total</b>	<b>1,166</b>	<b>849</b>	<b>72.8</b>	<b>648</b>	<b>55.6</b>	<b>547</b>	<b>46.9</b>	<b>306</b>	<b>26.2</b>	<b>104</b>	<b>8.9</b>	<b>42</b>	<b>3.6</b>		
<b>Graduation</b>															
White						16	4.7	108	31.7	150	44.0	163	47.8		
African-American						6	2.0	39	13.0	81	27.0	94	31.3		
Hispanic						9	2.3	67	17.2	131	33.7	159	40.9		
AS/PI						6	5.3	35	30.7	58	50.9	66	57.9		
AI/AN						0	0.0	4	30.8	7	53.8	7	53.8		
Other						0	0.0	1	16.7	3	50.0	3	50.0		
<b>Total</b>						<b>37</b>	<b>3.2</b>	<b>254</b>	<b>21.8</b>	<b>431</b>	<b>37.0</b>	<b>493</b>	<b>42.3</b>		

Note: FTIC denotes first-time-in-college.

**FTIC Retention and Graduation Tables  
Full-time Degree-seeking Freshmen by Ethnicity  
Fall 2013 through Fall 2015 Cohorts**

<u>Fall 2013</u> <b>Retention</b>	<b>Cohort Base</b>	<u>After 1 yr.</u>		<u>After 2 yrs.</u>		<u>After 3 yrs.</u>		<u>After 4 yrs.</u>		<u>After 5 yrs.</u>			
		<u>#</u>	<u>%</u>	<u>#</u>	<u>%</u>	<u>#</u>	<u>%</u>	<u>#</u>	<u>%</u>	<u>#</u>	<u>%</u>		
White	<b>333</b>	245	73.6	198	59.5	176	52.9	73	21.9	17	5.1		
African-American	<b>295</b>	204	69.2	147	49.8	127	43.1	73	24.7	30	10.2		
Hispanic	<b>371</b>	272	73.3	216	58.2	193	52.0	105	28.3	48	12.9		
AS/PI	<b>137</b>	117	85.4	100	73.0	89	65.0	44	32.1	12	8.8		
AI/AN	<b>9</b>	4	44.4	3	33.3	3	33.3	0	0.0	0	0.0		
Other	<b>3</b>	3	100.0	3	100.0	2	66.7	1	33.3	1	33.3		
<b>Total</b>	<b>1,151</b>	<b>847</b>	<b>73.6</b>	<b>668</b>	<b>58.0</b>	<b>591</b>	<b>51.3</b>	<b>297</b>	<b>25.8</b>	<b>109</b>	<b>9.5</b>		
<b>Graduation</b>													
White						11	3.3	102	30.6	154	46.2		
African-American						1	0.3	33	11.2	76	25.8		
Hispanic						5	1.3	70	18.9	126	34.0		
AS/PI						5	3.6	49	35.8	77	56.2		
AI/AN						0	0.0	2	22.2	2	22.2		
Other						0	0.0	1	33.3	1	33.3		
<b>Total</b>						<b>22</b>	<b>1.9</b>	<b>257</b>	<b>22.3</b>	<b>437</b>	<b>38.0</b>		
<b>Fall 2014</b>													
<b>Retention</b>	<b>Cohort Base</b>	<u>After 1 yr.</u>		<u>After 2 yrs.</u>		<u>After 3 yrs.</u>		<u>After 4 yrs.</u>					
White	<b>326</b>	244	74.8	214	65.6	190	58.3	87	26.7				
African-American	<b>273</b>	188	68.9	139	50.9	113	41.4	68	24.9				
Hispanic	<b>384</b>	292	76.0	234	60.9	205	53.4	117	30.5				
AS/PI	<b>143</b>	127	88.8	109	76.2	100	69.9	41	28.7				
AI/AN	<b>16</b>	13	81.3	9	56.3	6	37.5	1	6.3				
Other	<b>5</b>	5	100.0	4	80.0	2	40.0	1	20.0				
<b>Total</b>	<b>1,150</b>	<b>871</b>	<b>75.7</b>	<b>711</b>	<b>61.8</b>	<b>618</b>	<b>53.7</b>	<b>315</b>	<b>27.4</b>				
<b>Graduation</b>													
White						15	4.6	116	35.6				
African-American						3	1.1	31	11.4				
Hispanic						8	2.1	84	21.9				
AS/PI						4	2.8	59	41.3				
AI/AN						1	0.7	5	31.3				
Other						0	0.0	1	20.0				
<b>Total</b>						<b>31</b>	<b>2.7</b>	<b>298</b>	<b>25.9</b>				
<b>Fall 2015</b>													
<b>Retention</b>	<b>Cohort Base</b>	<u>After 1 yr.</u>		<u>After 2 yrs.</u>		<u>After 3 yrs.</u>							
White	<b>289</b>	238	82.4	200	69.2	182	63.0						
African-American	<b>275</b>	196	71.3	140	50.9	121	44.0						
Hispanic	<b>435</b>	348	80.0	279	64.1	244	56.1						
AS/PI	<b>107</b>	93	86.9	79	73.8	68	63.6						
AI/AN	<b>12</b>	11	91.7	7	58.3	8	66.7						
Other	<b>8</b>	6	75.0	6	75.0	6	75.0						
<b>Total</b>	<b>1,132</b>	<b>898</b>	<b>79.3</b>	<b>715</b>	<b>63.2</b>	<b>633</b>	<b>55.9</b>						
<b>Graduation</b>													
White						14	4.8						
African-American						4	1.5						
Hispanic						12	2.8						
AS/PI						5	4.7						
AI/AN						0	0.0						
Other						0	0.0						
<b>Total</b>						<b>35</b>	<b>3.1</b>						

Note: FTIC denotes first-time-in-college.

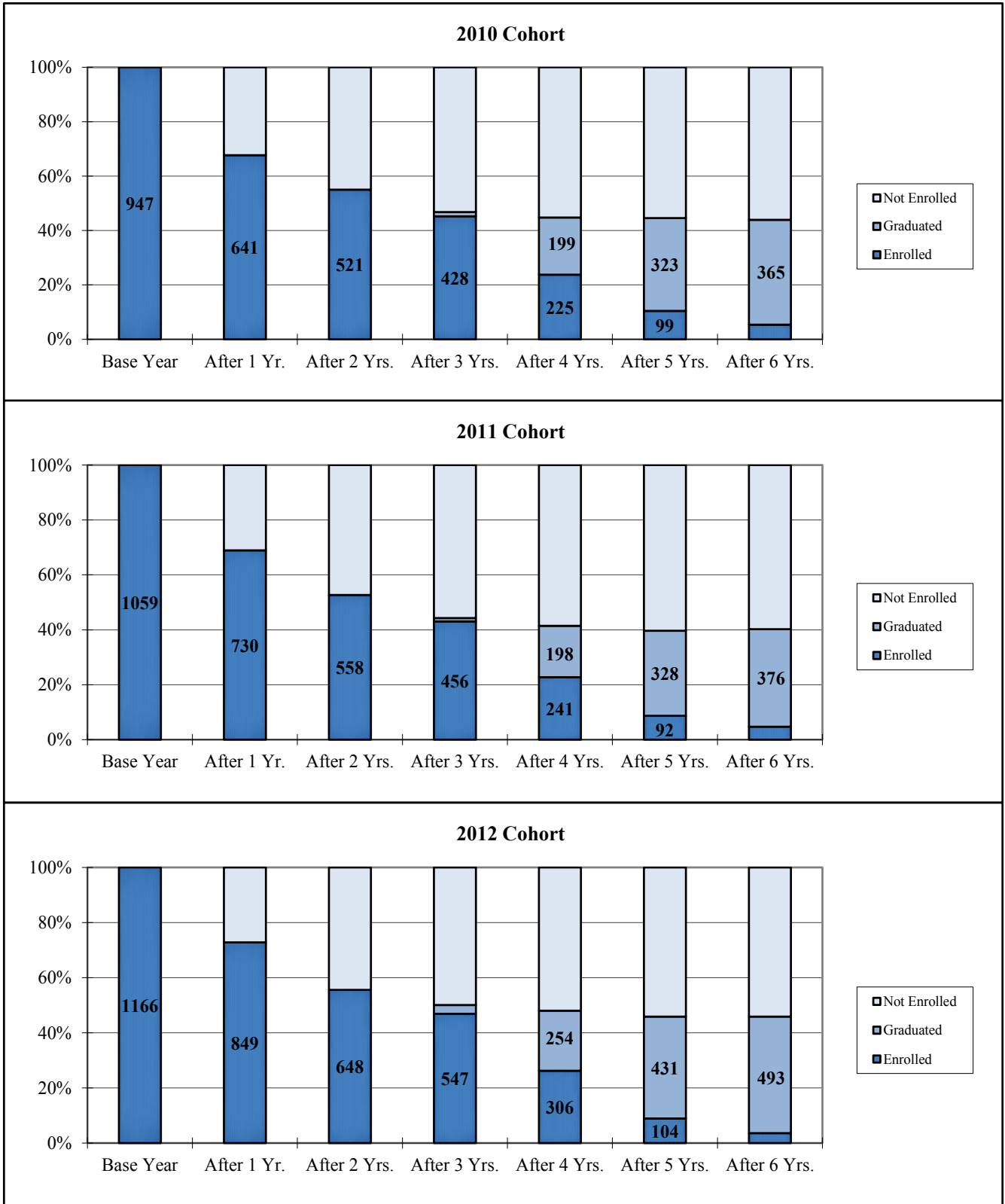
**FTIC Retention and Graduation Tables**  
**Full-time Degree-seeking Freshmen by Ethnicity**  
**Fall 2016 through Fall 2018 Cohorts**

<b>Fall 2016</b> <b>Retention</b>	<b>Cohort</b> <b>Base</b>	<b>After 1 yr.</b>		<b>After 2 yrs.</b>						
		<b>#</b>	<b>%</b>	<b>#</b>	<b>%</b>					
White	324	250	77.2	213	65.7					
African-American	277	202	72.9	153	55.2					
Hispanic	507	394	77.7	310	61.1					
AS/PI	148	130	87.8	103	69.6					
AI/AN	12	8	66.7	7	58.3					
Other	5	5	100.0	5	100.0					
<b>Total</b>	<b>1,278</b>	<b>993</b>	<b>77.7</b>	<b>794</b>	<b>62.1</b>					
<b>Graduation</b>										
White										
African-American										
Hispanic										
AS/PI										
AI/AN										
Int'l										
Other										
<b>Total</b>										
<b>Fall 2017</b>										
<b>Retention</b>	<b>Cohort</b> <b>Base</b>	<b>After 1 yr.</b>								
		<b>#</b>	<b>%</b>							
White	353	244	69.1							
African-American	232	167	72.0							
Hispanic	491	353	71.9							
AS/PI	143	121	84.6							
AI/AN	13	11	84.6							
Other	8	4	50.0							
<b>Total</b>	<b>1,243</b>	<b>902</b>	<b>72.6</b>							
<b>Graduation</b>										
White										
African-American										
Hispanic										
AS/PI										
AI/AN										
Other										
<b>Total</b>										
<b>Fall 2018</b>										
<b>Retention</b>	<b>Cohort</b> <b>Base</b>									
White	332									
African-American	224									
Hispanic	475									
AS/PI	157									
AI/AN	18									
Other	4									
<b>Total</b>	<b>1,212</b>									
<b>Graduation</b>										
White										
African-American										
Hispanic										
AS/PI										
AI/AN										
Other										
<b>Total</b>										

Note: FTIC denotes first-time-in-college.



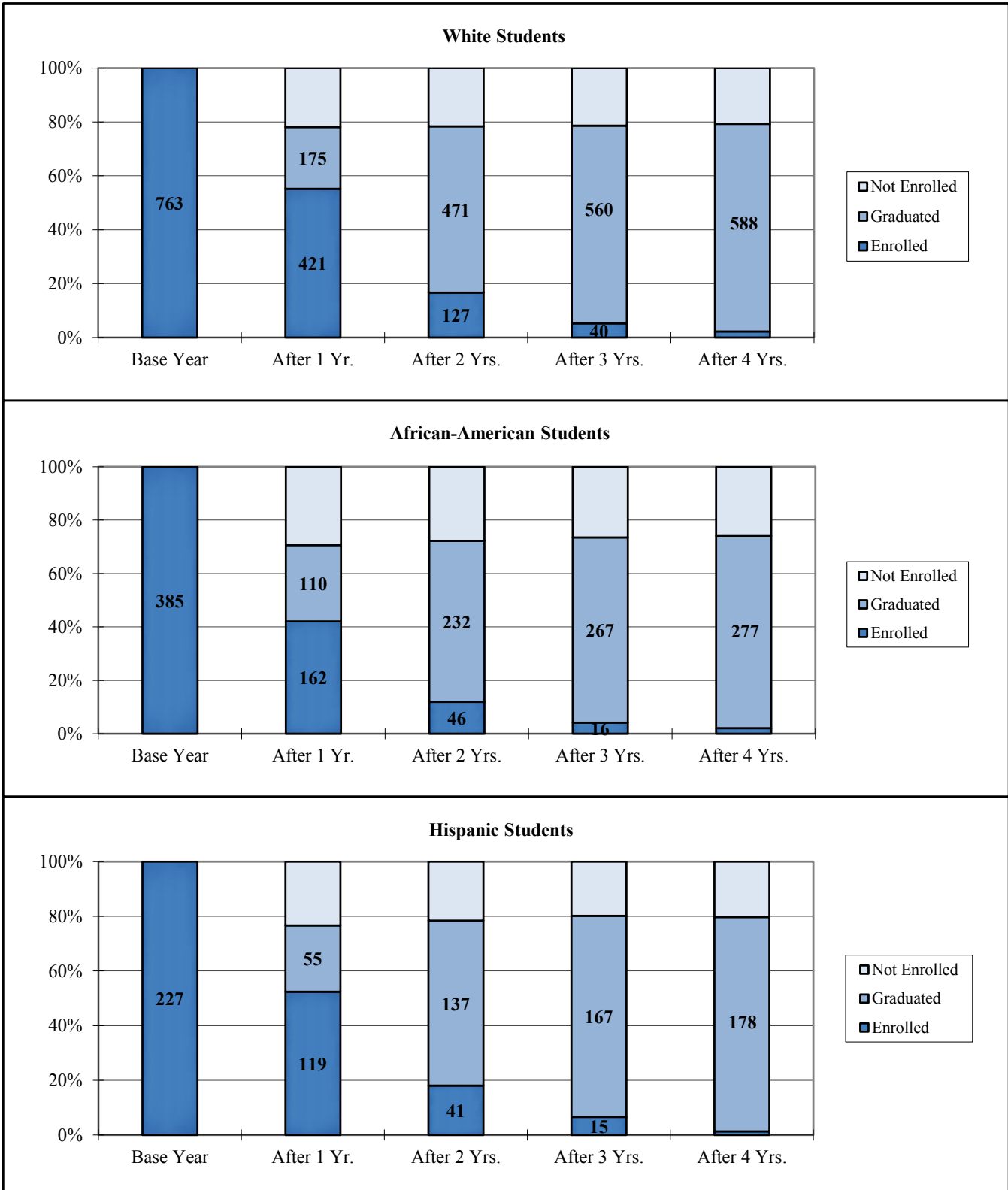
**FTIC Six-Year Retention and Graduation Chart  
Full-time Degree-seeking Freshmen  
Fall Semester Total Cohorts, 2010 through 2012**



Note: FTIC denotes first-time-in-college.

Source: TWU, Office of Institutional Research & Data Management, Fact Book 2019.

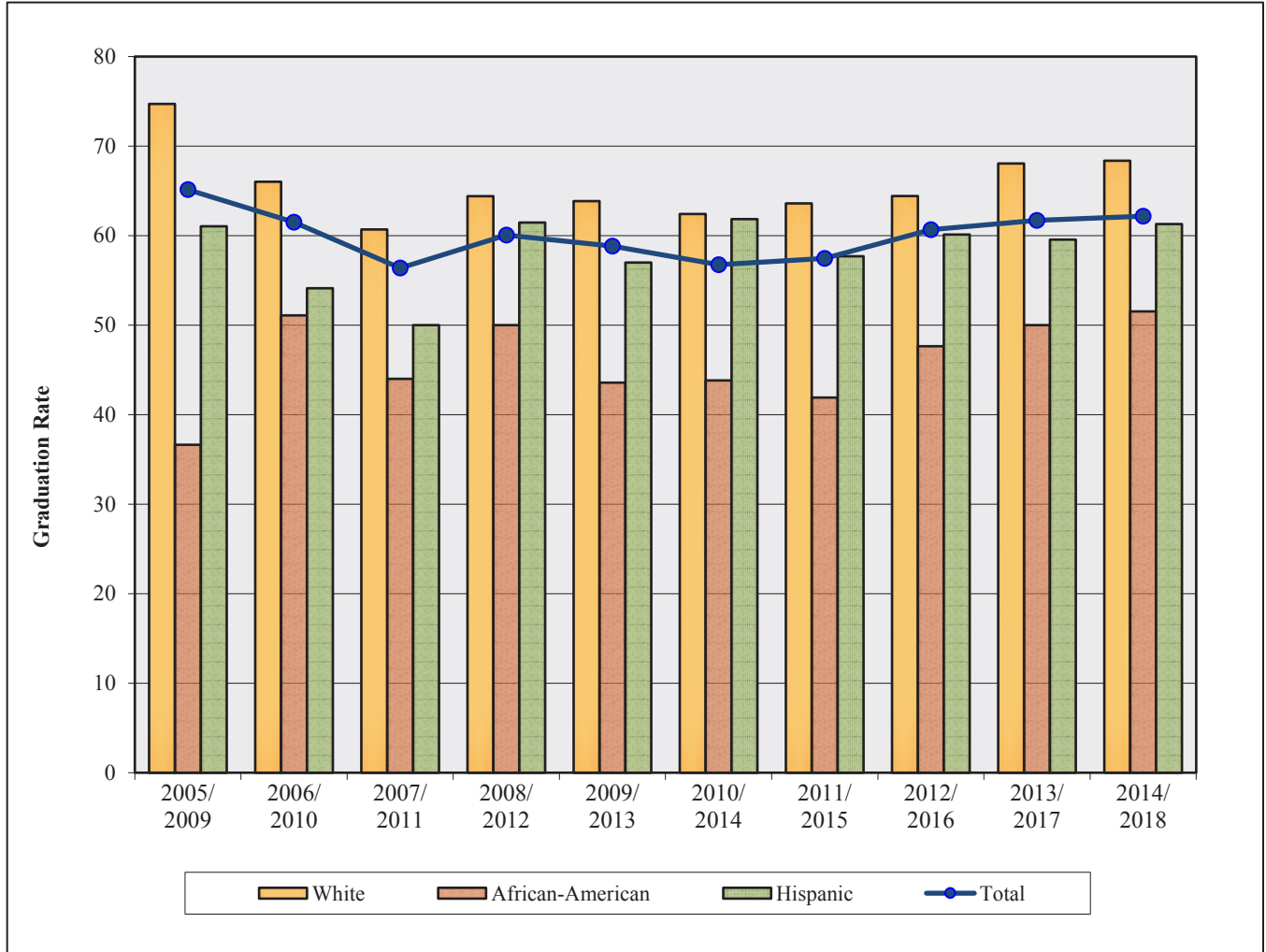
**FTIC Retention and Graduation Chart**  
**Full-time Degree-seeking Freshmen**  
**Fall Semester Cohorts by Ethnicity, 2012**



Note: FTIC denotes first-time-in-college.

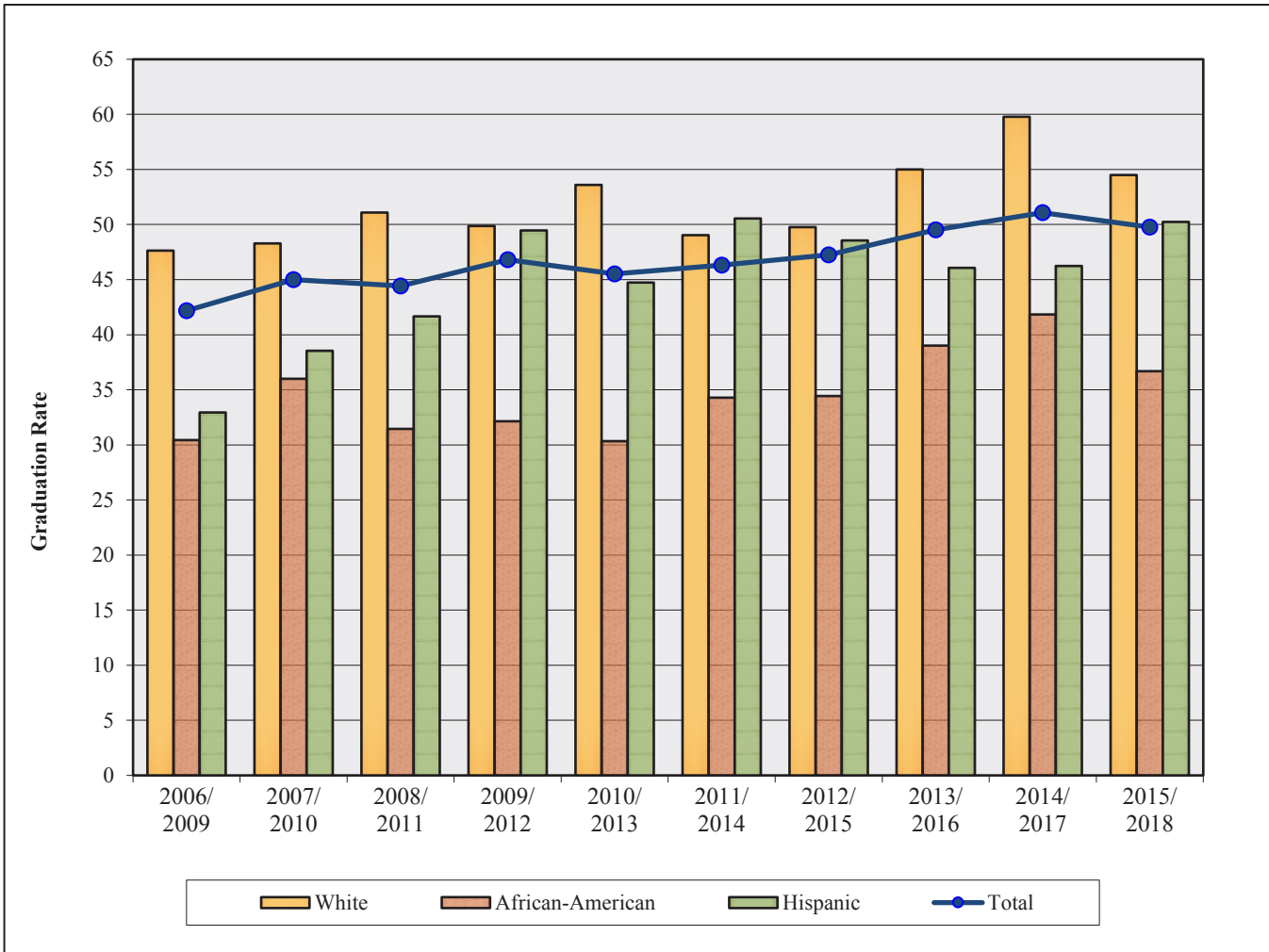
Source: TWU, Office of Institutional Research & Data Management, Fact Book 2019.

**Transfer Four-year Graduation Rates Chart  
Full-time Degree-seeking Undergraduates by Ethnicity  
Fall Semesters, 2005/2009 through 2014/2018**



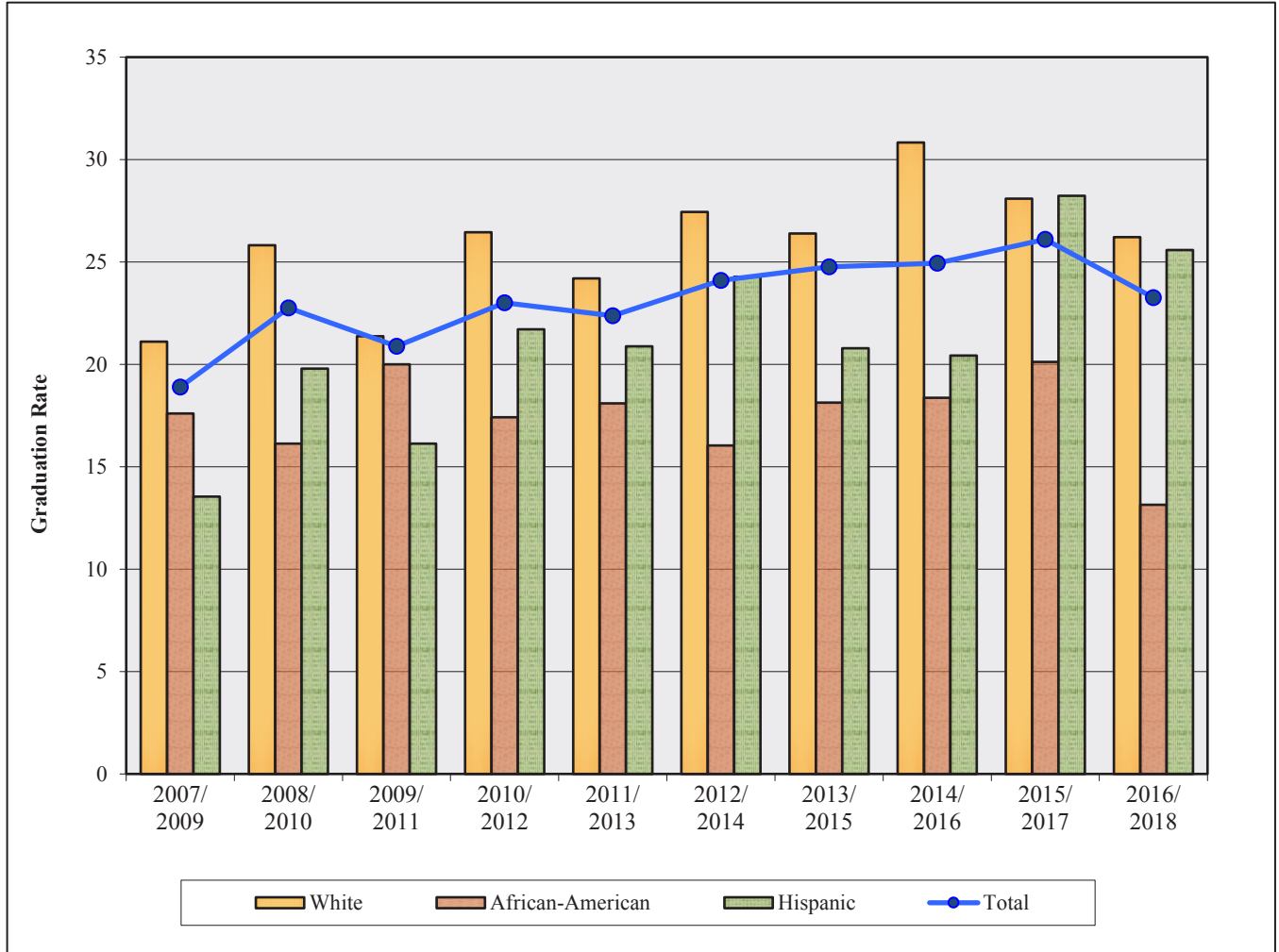
		Four-year Graduation									
Category		2005/ 2009	2006/ 2010	2007/ 2011	2008/ 2012	2009/ 2013	2010/ 2014	2011/ 2015	2012/ 2016	2013/ 2017	2014/ 2018
White	Cohort	344	359	379	368	379	431	467	430	360	373
	Rate	74.7	66.0	60.7	64.4	63.9	62.4	63.6	64.4	68.1	68.4
African-American	Cohort	101	92	125	124	140	178	210	212	182	196
	Rate	36.6	51.1	44.0	50.0	43.6	43.8	41.9	47.6	50.0	51.5
Hispanic	Cohort	77	85	96	96	93	152	182	173	178	186
	Rate	61.0	54.1	50.0	61.5	57.0	61.8	57.7	60.1	59.6	61.3
Total	Cohort	585	569	651	646	675	839	961	946	820	838
	Rate	65.1	61.5	56.4	60.1	58.8	56.7	57.4	60.7	61.7	62.2

**Transfer Three-year Graduation Rates Chart**  
**Full-time Degree-seeking Undergraduates by Ethnicity**  
**Fall Semesters, 2006/2009 through 2015/2018**



		<b>Three-year Graduation</b>									
<b>Category</b>		<b>2006/ 2009</b>	<b>2007/ 2010</b>	<b>2008/ 2011</b>	<b>2009/ 2012</b>	<b>2010/ 2013</b>	<b>2011/ 2014</b>	<b>2012/ 2015</b>	<b>2013/ 2016</b>	<b>2014/ 2017</b>	<b>2015/ 2018</b>
<b>White</b>	Cohort	359	379	368	379	431	467	430	360	373	356
	Rate	47.6	48.3	51.1	49.9	53.6	49.0	49.8	55.0	59.8	54.5
<b>African-American</b>	Cohort	92	125	124	140	178	210	212	182	196	169
	Rate	30.4	36.0	31.5	32.1	30.3	34.3	34.4	39.0	41.8	36.7
<b>Hispanic</b>	Cohort	85	96	96	93	152	182	173	178	186	209
	Rate	32.9	38.5	41.7	49.5	44.7	50.5	48.6	46.1	46.2	50.2
<b>Total</b>	Cohort	569	651	646	675	839	961	946	820	838	816
	Rate	42.2	45.0	44.4	46.8	45.5	46.3	47.3	49.5	51.1	49.8

**Transfer Two-year Graduation Rates Chart**  
**Full-time Degree-seeking Undergraduates by Ethnicity**  
**Fall Semesters, 2007/2009 through 2016/2018**



		Two-year Graduation									
Category		2007/ 2009	2008/ 2010	2009/ 2011	2010/ 2012	2011/ 2013	2012/ 2014	2013/ 2015	2014/ 2016	2015/ 2017	2016/ 2018
White	Cohort	379	368	379	431	467	430	360	373	356	351
	Rate	21.1	25.8	21.4	26.5	24.2	27.4	26.4	30.8	28.1	26.2
African-American	Cohort	125	124	140	178	210	212	182	196	169	175
	Rate	17.6	16.1	20.0	17.4	18.1	16.0	18.1	18.4	20.1	13.1
Hispanic	Cohort	96	96	93	152	182	173	178	186	209	215
	Rate	13.5	19.8	16.1	21.7	20.9	24.3	20.8	20.4	28.2	25.6
Total	Cohort	651	646	675	839	961	946	820	838	816	834
	Rate	18.9	22.8	20.9	23.0	22.4	24.1	24.8	24.9	26.1	23.3

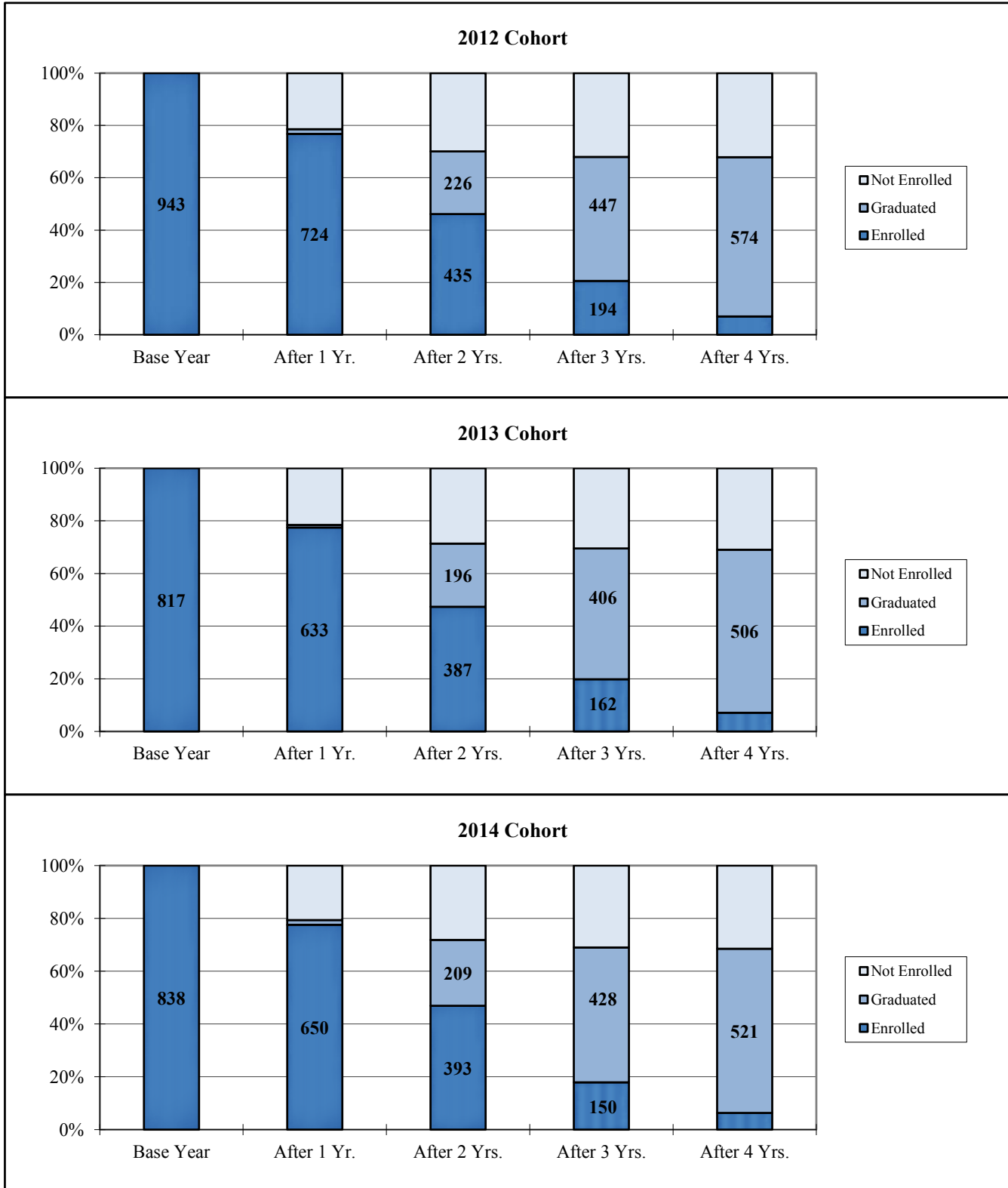
**Transfer Retention and Graduation Tables**  
**Full-time Degree-seeking Undergraduates by Ethnicity**  
**Fall 2013 through Fall 2015 Cohorts**

<b>Fall 2013</b>		<b>After 1 yr.</b>		<b>After 2 yrs.</b>		<b>After 3 yrs.</b>		<b>After 4 yrs.</b>		<b>After 5 yrs.</b>	
<b>Retention</b>	<b>Cohort Base</b>	<b>#</b>	<b>%</b>	<b>#</b>	<b>%</b>	<b>#</b>	<b>%</b>	<b>#</b>	<b>%</b>	<b>#</b>	<b>%</b>
White	360	294	81.7	177	49.2	66	18.3	25	6.9	10	2.8
African-American	182	129	70.9	84	46.2	39	21.4	15	8.2	7	3.8
Hispanic	176	135	76.7	92	52.3	39	22.2	12	6.8	9	5.1
AS/PI	54	41	75.9	22	40.7	12	22.2	5	9.3	1	1.9
AI/AN	12	9	75.0	6	50.0	5	41.7	1	8.3	0	0.0
Int'l	22	17	77.3	5	22.7	1	4.5	0	0.0	0	0.0
Other	11	8	72.7	1	9.1	0	0.0	0	0.0	0	0.0
<b>Total</b>	<b>817</b>	<b>633</b>	<b>77.5</b>	<b>387</b>	<b>47.4</b>	<b>162</b>	<b>19.8</b>	<b>58</b>	<b>7.1</b>	<b>27</b>	<b>3.3</b>
<b>Graduation</b>											
White		4	1.1	92	25.6	198	55.0	245	68.1	260	72.2
African-American		2	1.1	31	17.0	71	39.0	91	50.0	100	54.9
Hispanic		1	0.6	37	21.0	82	46.6	106	60.2	114	64.8
AS/PI		0	0.0	14	25.9	26	48.1	31	57.4	35	64.8
AI/AN		0	0.0	3	25.0	4	33.3	7	58.3	7	58.3
Int'l		0	0.0	12	54.5	16	72.7	17	77.3	17	77.3
Other		1	9.1	7	63.6	9	81.8	9	81.8	9	81.8
<b>Total</b>		<b>8</b>	<b>1.0</b>	<b>196</b>	<b>24.0</b>	<b>406</b>	<b>49.7</b>	<b>506</b>	<b>61.9</b>	<b>542</b>	<b>66.3</b>
<b>Fall 2014</b>		<b>After 1 yr.</b>		<b>After 2 yrs.</b>		<b>After 3 yrs.</b>		<b>After 4 yrs.</b>			
<b>Retention</b>	<b>Cohort Base</b>	<b>#</b>	<b>%</b>	<b>#</b>	<b>%</b>	<b>#</b>	<b>%</b>	<b>#</b>	<b>%</b>		
White	373	296	79.4	170	45.6	53	14.2	17	4.6		
African-American	196	144	73.5	88	44.9	35	17.9	16	8.2		
Hispanic	186	146	78.5	93	50.0	43	23.1	12	6.5		
AS/PI	47	35	74.5	25	53.2	12	25.5	7	14.9		
AI/AN	12	11	91.7	8	66.7	2	16.7	0	0.0		
Int'l	21	18	85.7	8	38.1	4	19.0	1	4.8		
<b>Total</b>	<b>838</b>	<b>650</b>	<b>77.6</b>	<b>393</b>	<b>46.9</b>	<b>150</b>	<b>17.9</b>	<b>53</b>	<b>6.3</b>		
<b>Graduation</b>											
White		13	3.5	115	30.8	223	59.8	255	68.4		
African-American		0	0.0	36	18.4	82	41.8	101	51.5		
Hispanic		1	0.5	38	20.4	86	46.2	114	61.3		
AS/PI		1	2.1	10	21.3	17	36.2	26	55.3		
AI/AN		0	0.0	1	8.3	7	58.3	8	66.7		
Int'l		0	0.0	9	42.9	13	61.9	16	76.2		
<b>Total</b>		<b>15</b>	<b>1.8</b>	<b>209</b>	<b>24.9</b>	<b>428</b>	<b>51.1</b>	<b>521</b>	<b>62.2</b>		
<b>Fall 2015</b>		<b>After 1 yr.</b>		<b>After 2 yrs.</b>		<b>After 3 yrs.</b>					
<b>Retention</b>	<b>Cohort Base</b>	<b>#</b>	<b>%</b>	<b>#</b>	<b>%</b>	<b>#</b>	<b>%</b>				
White	356	280	78.7	160	44.9	67	18.8				
African-American	169	118	69.8	62	36.7	28	16.6				
Hispanic	209	163	78.0	88	42.1	38	18.2				
AS/PI	59	45	76.3	22	37.3	9	15.3				
AI/AN	8	7	87.5	6	75.0	0	0.0				
Int'l	9	6	66.7	4	44.4	1	11.1				
Other	6	4	66.7	5	83.3	2	33.3				
<b>Total</b>	<b>816</b>	<b>623</b>	<b>76.3</b>	<b>347</b>	<b>42.5</b>	<b>145</b>	<b>17.8</b>				
<b>Graduation</b>											
White		7	2.0	100	28.1	194	54.5				
African-American		3	1.8	34	20.1	62	36.7				
Hispanic		4	1.9	59	28.2	105	50.2				
AS/PI		1	1.7	17	28.8	31	52.5				
AI/AN		0	0.0	1	12.5	7	87.5				
Int'l		0	0.0	2	22.2	5	55.6				
Other		0	0.0	0	0.0	2	33.3				
<b>Total</b>		<b>15</b>	<b>1.8</b>	<b>213</b>	<b>26.1</b>	<b>406</b>	<b>49.8</b>				

**Transfer Retention and Graduation Tables  
Full-time Degree-seeking Transfers by Ethnicity  
Fall 2016 through Fall 2018 Cohorts**

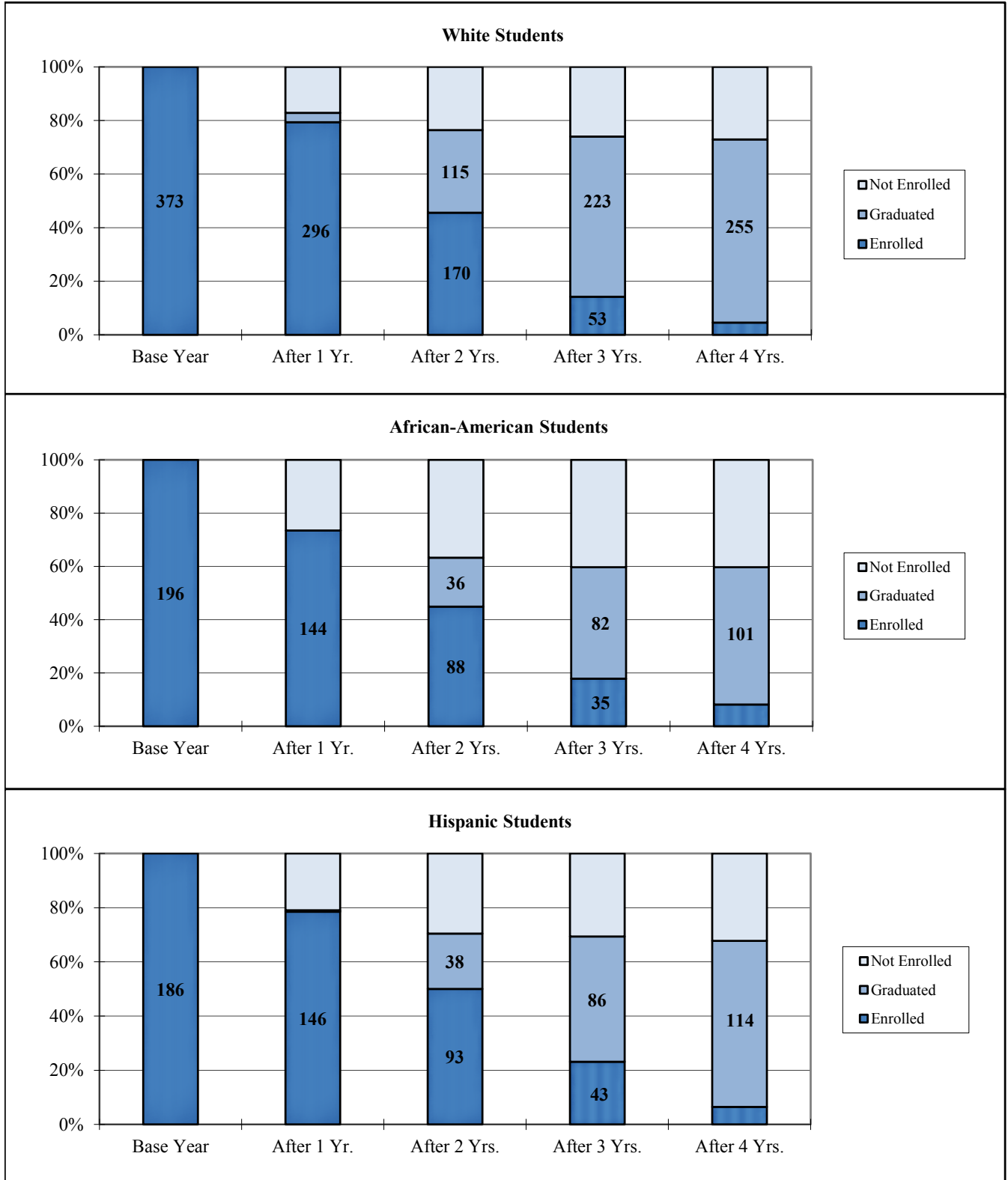
<u>Fall 2016</u>	<u>Cohort</u> <u>Base</u>	<u>After 1 yr.</u>		<u>After 2 yrs.</u>				
<u>Retention</u>		<u>#</u>	<u>%</u>	<u>#</u>	<u>%</u>			
White	<b>351</b>	258	73.5	158	45.0			
African-American	<b>175</b>	123	70.3	77	44.0			
Hispanic	<b>215</b>	163	75.8	97	45.1			
AS/PI	<b>68</b>	54	79.4	28	41.2			
AI/AN	<b>9</b>	6	66.7	4	44.4			
Int'l	<b>11</b>	10	90.9	8	72.7			
<b>Total</b>	<b>834</b>	<b>617</b>	<b>74.0</b>	<b>374</b>	<b>44.8</b>			
<b><u>Graduation</u></b>								
White		9	2.6	92	26.2			
African-American		1	0.6	23	13.1			
Hispanic		2	0.9	55	25.6			
AS/PI		2	2.9	20	29.4			
AI/AN		0	0.0	1	11.1			
Int'l		0	0.0	3	27.3			
<b>Total</b>		<b>14</b>	<b>1.7</b>	<b>194</b>	<b>23.3</b>			
<b><u>Fall 2017</u></b>								
<u>Retention</u>	<u>Cohort</u> <u>Base</u>	<u>After 1 yr.</u>						
		<u>#</u>	<u>%</u>					
White	<b>324</b>	237	73.1					
African-American	<b>187</b>	131	70.1					
Hispanic	<b>228</b>	166	72.8					
AS/PI	<b>55</b>	46	83.6					
AI/AN	<b>10</b>	7	70.0					
Int'l	<b>24</b>	21	87.5					
Other	<b>8</b>	4	50.0					
<b>Total</b>	<b>836</b>	<b>612</b>	<b>73.2</b>					
<b><u>Graduation</u></b>								
White		9	2.8					
African-American		4	2.1					
Hispanic		4	1.8					
AS/PI		1	1.8					
AI/AN		1	10.0					
Int'l		1	4.2					
Other		0	0.0					
<b>Total</b>		<b>20</b>	<b>2.4</b>					
<b><u>Fall 2018</u></b>								
<u>Retention</u>	<u>Cohort</u> <u>Base</u>							
White	<b>317</b>							
African-American	<b>187</b>							
Hispanic	<b>199</b>							
AS/PI	<b>67</b>							
AI/AN	<b>12</b>							
Int'l	<b>20</b>							
Other	<b>5</b>							
<b>Total</b>	<b>807</b>							
<b><u>Graduation</u></b>								
White								
African-American								
Hispanic								
AS/PI								
AI/AN								
Int'l								
Other								
<b>Total</b>								

**Transfer Four-Year Retention and Graduation Chart**  
**Full-time Degree-seeking Undergraduates**  
**Fall Semester Total Cohorts, 2012 through 2014**





**Transfer Four-Year Retention and Graduation Chart**  
**Full-time Degree-seeking Undergraduates**  
**Fall Semester Cohorts by Ethnicity, 2014**



**New Admits Retention and Graduation Tables**  
**Degree-seeking Master's Level Students by Ethnicity**  
**2012-13 through 2014-15 Cohorts**

<b>2012-13</b>		<b>Cohort Base</b>	<b>After 1 yr.</b>		<b>After 2 yrs.</b>		<b>After 3 yrs.</b>		<b>After 4 yrs.</b>		<b>After 5 yrs.</b>	
<b>Retention</b>	<b>#</b>		<b>%</b>	<b>#</b>	<b>%</b>	<b>#</b>	<b>%</b>	<b>#</b>	<b>%</b>	<b>#</b>	<b>%</b>	
White	<b>951</b>	559	58.8	145	15.2	47	4.9	15	1.6	3	0.3	
African-American	<b>438</b>	158	36.1	44	10.0	14	3.2	11	2.5	2	0.5	
Hispanic	<b>260</b>	161	61.9	37	14.2	15	5.8	4	1.5	2	0.8	
AS/PI	<b>173</b>	107	61.8	33	19.1	10	5.8	2	1.2	0	0.0	
AI/AN	<b>27</b>	10	37.0	2	7.4	0	0.0	0	0.0	0	0.0	
Int'l	<b>52</b>	24	46.2	8	15.4	2	3.8	0	0.0	0	0.0	
Other	<b>21</b>	18	85.7	4	19.0	0	0.0	0	0.0	0	0.0	
<b>Total</b>	<b>1,922</b>	<b>1,037</b>	<b>54.0</b>	<b>273</b>	<b>14.2</b>	<b>88</b>	<b>4.6</b>	<b>32</b>	<b>1.7</b>	<b>7</b>	<b>0.4</b>	
<b>Graduation</b>												
White		197	20.7	595	62.6	694	73.0	733	77.1	748	78.7	
African-American		161	36.8	276	63.0	310	70.8	316	72.1	322	73.5	
Hispanic		62	23.8	179	68.8	204	78.5	217	83.5	219	84.2	
AS/PI		40	23.1	112	64.7	137	79.2	145	83.8	147	85.0	
AI/AN		7	25.9	14	51.9	17	63.0	17	63.0	18	66.7	
Int'l		15	28.8	32	61.5	38	73.1	40	76.9	40	76.9	
Other		2	9.5	16	76.2	17	81.0	18	85.7	18	85.7	
<b>Total</b>		<b>484</b>	<b>25.2</b>	<b>1,224</b>	<b>63.7</b>	<b>1,417</b>	<b>73.7</b>	<b>1,486</b>	<b>77.3</b>	<b>1,512</b>	<b>78.7</b>	
<b>2013-14</b>		<b>Cohort Base</b>	<b>After 1 yr.</b>		<b>After 2 yrs.</b>		<b>After 3 yrs.</b>		<b>After 4 yrs.</b>			
<b>Retention</b>	<b>#</b>		<b>%</b>	<b>#</b>	<b>%</b>	<b>#</b>	<b>%</b>	<b>#</b>	<b>%</b>			
White	<b>763</b>	421	55.2	127	16.6	40	5.2	17	2.2			
African-American	<b>385</b>	162	42.1	46	11.9	16	4.2	8	2.1			
Hispanic	<b>227</b>	119	52.4	41	18.1	15	6.6	3	1.3			
AS/PI	<b>194</b>	133	68.6	45	23.2	22	11.3	3	1.5			
Int'l	<b>43</b>	20	46.5	11	25.6	2	4.7	0	0.0			
Other	<b>16</b>	8	50.0	1	6.3	0	0.0	0	0.0			
<b>Total</b>	<b>1,633</b>	<b>865</b>	<b>53.0</b>	<b>273</b>	<b>16.7</b>	<b>96</b>	<b>5.9</b>	<b>31</b>	<b>1.9</b>			
<b>Graduation</b>												
White		175	22.9	471	61.7	560	73.4	588	77.1			
African-American		110	28.6	232	60.3	267	69.4	277	71.9			
Hispanic		55	24.2	137	60.4	167	73.6	178	78.4			
AS/PI		28	14.4	110	56.7	141	72.7	159	82.0			
Int'l		8	18.6	21	48.8	28	65.1	30	69.8			
Other		2	12.5	8	50.0	10	62.5	10	62.5			
<b>Total</b>		<b>379</b>	<b>23.2</b>	<b>981</b>	<b>60.1</b>	<b>1,175</b>	<b>72.0</b>	<b>1,245</b>	<b>76.2</b>			
<b>2014-15</b>		<b>Cohort Base</b>	<b>After 1 yr.</b>		<b>After 2 yrs.</b>		<b>After 3 yrs.</b>					
<b>Retention</b>	<b>#</b>		<b>%</b>	<b>#</b>	<b>%</b>	<b>#</b>	<b>%</b>					
White	<b>767</b>	452	58.9	126	16.4	35	4.6					
African-American	<b>368</b>	164	44.6	60	16.3	25	6.8					
Hispanic	<b>237</b>	134	56.5	31	13.1	13	5.5					
AS/PI	<b>192</b>	121	63.0	44	22.9	18	9.4					
AI/AN	<b>23</b>	15	65.2	5	21.7	3	13.0					
Int'l	<b>68</b>	38	55.9	12	17.6	1	1.5					
Other	<b>23</b>	14	60.9	7	30.4	3	13.0					
<b>Total</b>	<b>1,678</b>	<b>938</b>	<b>55.9</b>	<b>285</b>	<b>17.0</b>	<b>98</b>	<b>5.8</b>					
<b>Graduation</b>												
White		161	21.0	489	63.8	581	75.7					
African-American		98	26.6	195	53.0	234	63.6					
Hispanic		39	16.5	140	59.1	162	68.4					
AS/PI		28	14.6	101	52.6	128	66.7					
AI/AN		1	4.3	10	43.5	12	52.2					
Int'l		16	23.5	42	61.8	53	77.9					
Other		0	0.0	8	34.8	12	52.2					
<b>Total</b>		<b>343</b>	<b>20.4</b>	<b>985</b>	<b>58.7</b>	<b>1,182</b>	<b>70.4</b>					

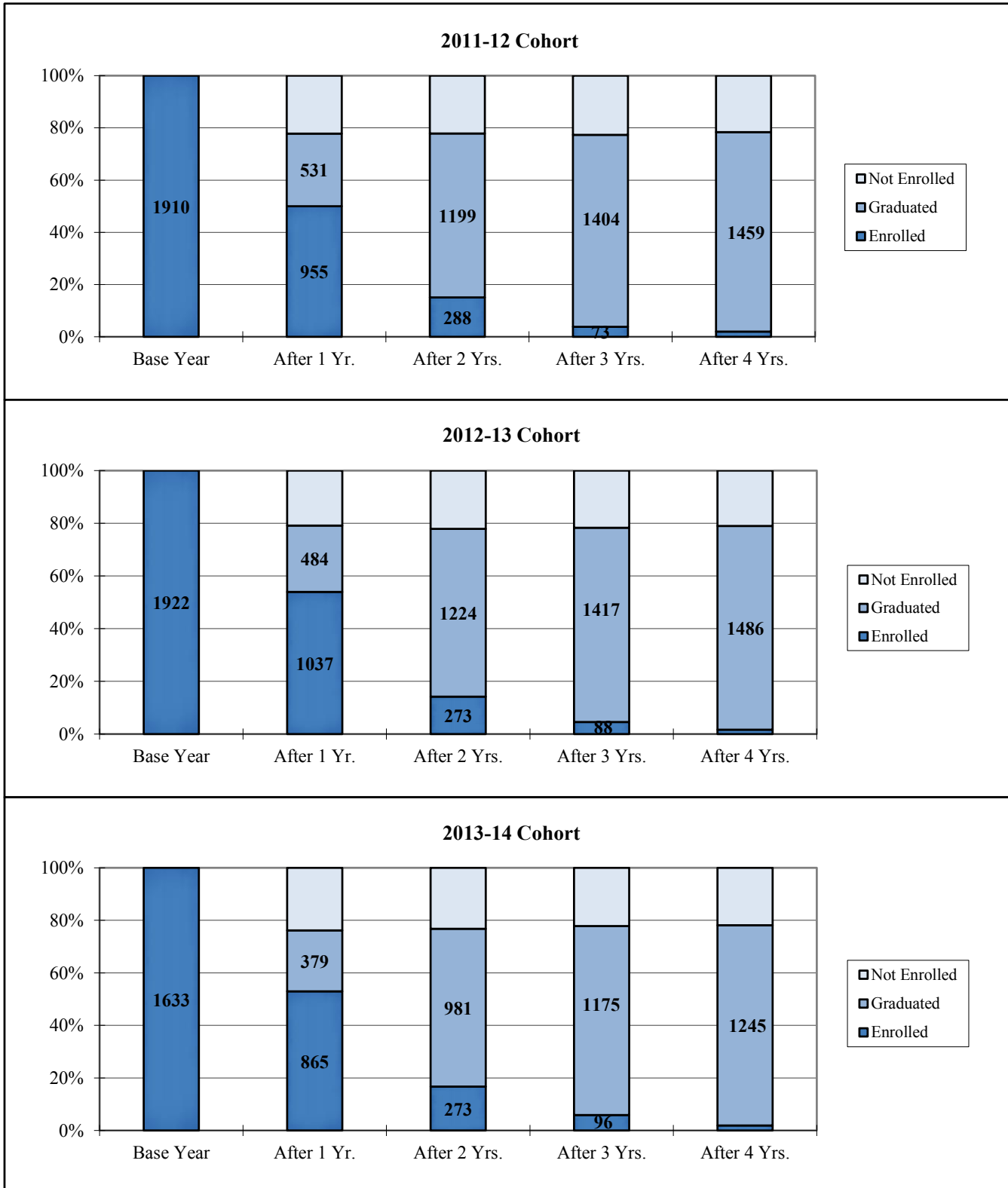
The cohort includes all degree-seeking masters level students who are newly admitted into a program during the academic year.

New Admits Retention and Graduation Tables  
 Degree-seeking Master's Level Students by Ethnicity  
 2015-16 through 2017-18 Cohorts

<b>2015-16</b>		<b>Cohort</b>		<b>After 1 yr.</b>		<b>After 2 yrs.</b>				
<b>Retention</b>	<b>Base</b>	<b>#</b>	<b>%</b>	<b>#</b>	<b>%</b>					
White	769	448	58.3	128	16.6					
African-American	357	185	51.8	50	14.0					
Hispanic	271	156	57.6	42	15.5					
AS/PI	176	133	75.6	34	19.3					
AI/AN	16	7	43.8	4	25.0					
Int'l	42	18	42.9	4	9.5					
Other	31	19	61.3	10	32.3					
<b>Total</b>	<b>1,662</b>	<b>966</b>	<b>58.1</b>	<b>272</b>	<b>16.4</b>					
<b>Graduation</b>										
White		160	20.8	466	60.6					
African-American		84	23.5	216	60.5					
Hispanic		45	16.6	156	57.6					
AS/PI		27	15.3	121	68.8					
AI/AN		3	18.8	7	43.8					
Int'l		5	11.9	20	47.6					
Other		4	12.9	12	38.7					
<b>Total</b>		<b>328</b>	<b>19.7</b>	<b>998</b>	<b>60.0</b>					
<b>2016-17</b>		<b>Cohort</b>		<b>After 1 yr.</b>						
<b>Retention</b>	<b>Base</b>	<b>#</b>	<b>%</b>							
White	795	479	60.3							
African-American	275	137	49.8							
Hispanic	277	178	64.3							
AS/PI	171	106	62.0							
AI/AN	14	6	42.9							
Int'l	42	18	42.9							
Other	23	13	56.5							
<b>Total</b>	<b>1,597</b>	<b>937</b>	<b>58.7</b>							
<b>Graduation</b>										
White		145	18.2							
African-American		67	24.4							
Hispanic		34	12.3							
AS/PI		30	17.5							
AI/AN		2	14.3							
Int'l		12	28.6							
Other		4	17.4							
<b>Total</b>		<b>294</b>	<b>18.4</b>							
<b>2017-18</b>		<b>Cohort</b>								
<b>Retention</b>	<b>Base</b>									
White	740									
African-American	293									
Hispanic	311									
AS/PI	156									
Int'l	28									
Other	20									
<b>Total</b>	<b>1,558</b>									
<b>Graduation</b>										
White										
African-American										
Hispanic										
AS/PI										
Int'l										
Other										
<b>Total</b>										

The cohort includes all degree-seeking masters level students who are newly admitted into a program during the academic year.

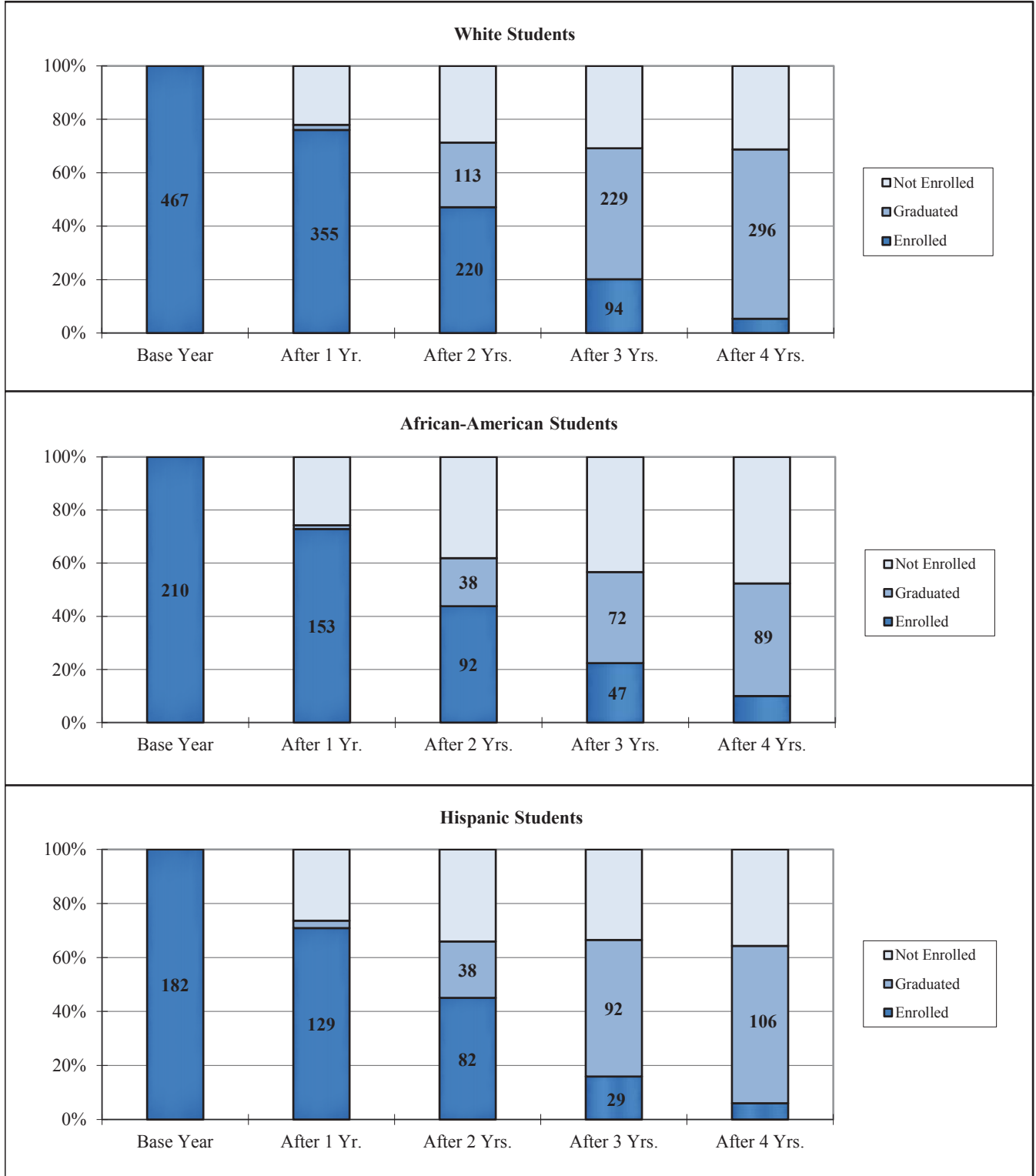
**New Admit Four-Year Retention and Graduation Chart**  
**Degree-seeking Master's Level Students**  
**Total Cohorts, 2011-12 through 2013-14**



The cohort includes all degree-seeking masters level students who are newly admitted into a program during the academic year.

Source: TWU, Office of Institutional Research & Data Management, Fact Book 2019.

**New Admit Four-Year Retention and Graduation Chart  
Degree-seeking Master's Level Students  
Total Cohorts by Ethnicity, 2013-14**



The cohort includes all degree-seeking masters level students who are newly admitted into a program during the academic year.