



HOUSING & DINING

TEXAS WOMAN'S UNIVERSITY

2024-2025 Off-Campus Housing



Upperclass Housing

Due to the limited number of beds available for juniors and seniors at TWU, there was a lottery for Lowry Woods Apartments.

Current residents who completed their application & license between February 12 – 29 were placed on a randomized list on March 1.

The 166 students at the top of the list selected their room March 5 – 7. Everyone else has been placed on the waitlist in the order they applied.



Off-Campus Housing

- TWU is committed to providing off-campus housing.
- TWU conducted an Request for Proposal (RFP).
- Contracts negotiations are ongoing. Once signed, the locations will be revealed and tours or open houses will be provided.
- Email communications have occurred on March 18, April 11, and April 29. Communication will continue, and you are always welcome to reach out.
- The room bill for the semester will be added to your TWU student account as if you lived on campus.
- TWU wants this experience to feel like you are part of TWU Housing & Dining.
- Because of the proximity to campus, TWU intends to provide transportation.
- Professional and student staff from Housing will be living at each property.



Amenities

Same as TWU

- All utilities included
- WiFi
- TWU roommates
- Fully-furnished: full-size beds
 - Property 2: Full XL
- Patrolled multiple times per day by TWU Police
- Emotional Support Animal approval process
- No smoking/vaping

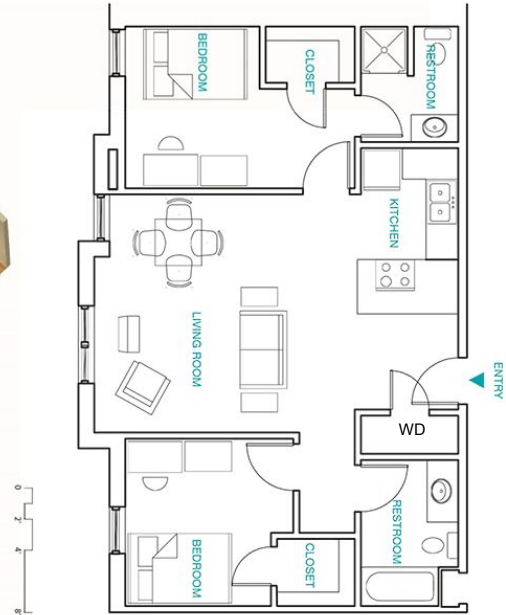
Different from TWU

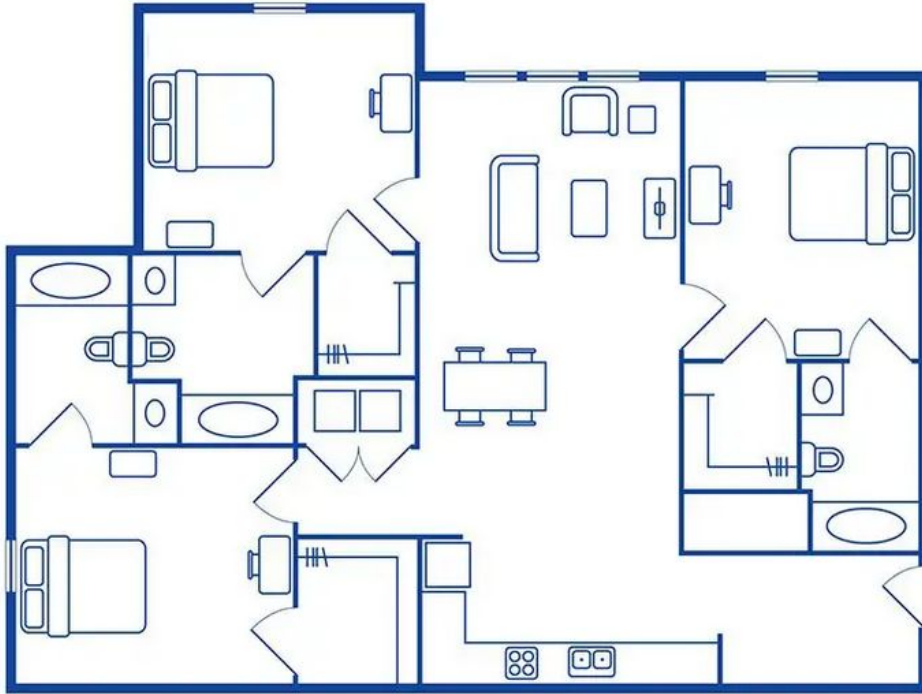
- Pool
- Pet-friendly: Follow approval policy of the complex and pay the fees
- Parking: ALL vehicles, including visitors, must be registered
- Lightbulbs replaced by residents
- Apartment mailbox and 24/7 package room
- Property 1: Valet trash



Property 1: 2Bed/2Bath

20 units (38 resident beds + 2 Resident Assistant beds)





Property 1

3Bed/3Bath

33 units (99 beds)



HOUSING & DINING
TEXAS WOMAN'S UNIVERSITY



LOWER LEVEL



UPPER LEVEL

Property 2

3Bed/3Bath

5 units

(13 resident beds + 2
Resident Assistant
beds)





LOWER LEVEL



UPPER LEVEL

Property 2 4Bed/4Bath

15 units (60 beds)



HOUSING & DINING
TEXAS WOMAN'S UNIVERSITY

2024-2025 Off-Campus Housing Rates

Off-Campus Housing

2 Bed/2 Bath	\$5750
3 Bed/3 Bath	\$5500
4 Bed/4 Bath	\$5250

Complete List of Rates:

<https://twu.edu/housing/housing/rates-and-contract-terms/>



HOUSING & DINING
TEXAS WOMAN'S UNIVERSITY

2024-2025 Meal Plans

Residential Plans

Commuter Plans

10-Meal Plan with \$300 Dining Dollars | \$2,150

Commuter 300 with \$315 Dining Dollars | \$300

15-Meal Plan with \$300 Dining Dollars | \$2,450

Commuter 40 with \$150 Dining Dollars | \$400

Block 100 with \$750 Dining Dollars | \$2,375

Commuter 500 with \$525 Dining Dollars | \$500

Complete List of Rates:

<https://twu.edu/housing/housing/rates-and-contract-terms/>



HOUSING & DINING
TEXAS WOMAN'S UNIVERSITY

The First Group

STEP 1: OPTIONAL: Participate in roommate matching May 3 - 13. Your original match will not change unless you remove yourself from the group.

STEP 2: Select your room May 14 - 15. If you do not complete Part 3 in the housing portal, you will be manually assigned to a room.



Roommate Matching FAQ

I don't have a roommate preference. Do I need to go through Roommate Matching?

No. If you don't have a roommate preference, you don't need to complete Part 2. However, it is highly recommended.

I already know who I want to be roommates with, do I have to go through Roommate Matching?

Yes. Just search for them and send a roommate request.

The person I want to match with isn't showing up!

Make sure they have submitted their application/license and have the same hall eligibility criteria as you do.

I want to change my roommate. How do I do this?

Before selecting your room, you can unmatch with your roommates. Feel free to change as many times as you like prior to selecting your room.



Students on the Waitlist

As a room opens off-campus, you will be assigned. Roommate matches will be *attempted* to be honored, but are not guaranteed.

Your waitlist location for a room in Lowry Woods does not change by being assigned off-campus. If a room opens in Lowry, and your number is up, you will have 48 hours to accept. Roommate matches will not be honored.



Students Who Haven't Applied

Those students not under the Residency Requirement and who are only eligible for Lowry Woods or off-campus, will be added to the end of the current waitlist.

Roommate matching will be less useful because you will be assigned as a room becomes available.



August

Room assignments will freeze on August 1. Only new applicants will be assigned. If you want to change rooms after August 1, you would submit a room change request to your Residence Director after the first two weeks of the semester.

Fall Move-in for Lowry Woods is Wednesday, August 21.

Fall Move-in for off-campus will be either August 21 or 22.



Questions?



HOUSING & DINING
TEXAS WOMAN'S UNIVERSITY