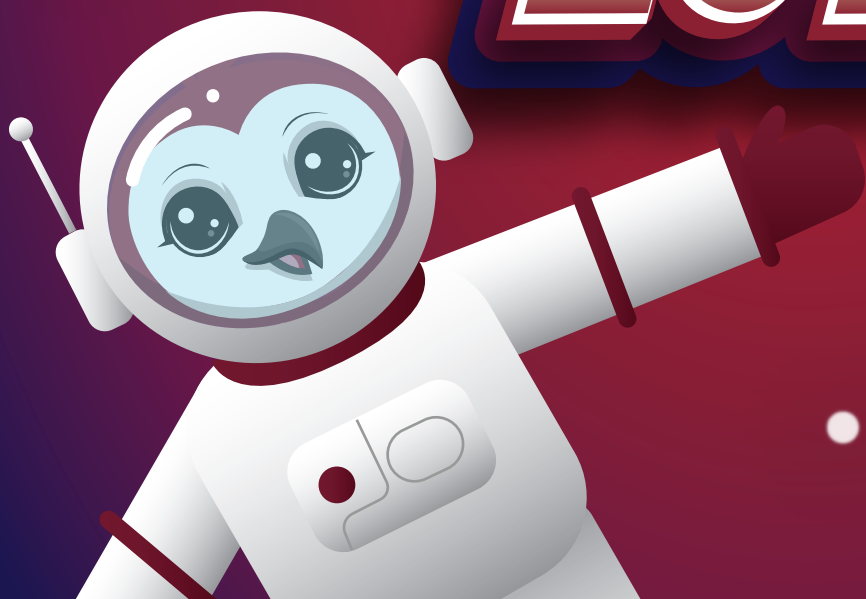
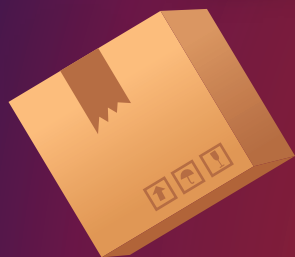




HOUSING & DINING  
TEXAS WOMAN'S UNIVERSITY

# MOVE-IN GUIDE SPRING 2024



# Essential Information

## OPENING / CLOSING DATES

- Spring Opening: Jan. 10
- MLK Holiday: Jan. 15
- First Day of Classes: Jan. 16
- Spring Break: Mar. 11-15\*
- Residence Halls Close: May 10

\*During break periods the residence halls will operate under reduced services and staff will remain on call

## RESIDENCE HALL CONTACT INFO

### Parliament Village

703 Administration Drive  
Denton, TX 76204  
(940) 898-3655

### Guinn Hall

420 E. University Drive  
Denton, TX 76204  
(940) 898-3636

### Stark Hall

1719 N. Bell Avenue  
Denton, TX 76204  
(940) 898-3694

### Lowry Woods Community

1600 Oakland Street  
Denton, TX 76204  
(940) 898-3785

Each residence hall has its own unique address where residents may receive mail and packages from official carriers. It is the resident's responsibility to ensure their address is listed correctly. Upon move-out a resident is responsible for setting up their own mail forwarding.

## YOUR CONTRACT

Make sure that you have read your Housing & Dining contract and are aware of all the terms and conditions. The housing contract can be found online at [www.twu.edu/housing/](http://www.twu.edu/housing/) under the "Housing" tab. To request a cancellation of your contract, please read Section 12 of the housing contract to review the cancellation policy.

## WHEN YOU ARRIVE

Remember to have your TWU ID when you arrive for move-in day. On January 10, please go to the front desk of your hall to check in. You must present your ID when you enter your building to pick up your room key upon unloading your vehicle. We ask that guests and family members remain outside during this time to avoid crowding.

Spring Move-in for new residents is scheduled for 1 - 5 pm on Wednesday, January 10. If you are attending orientation that day, please finish your orientation activities before moving in. If you are unable to pick up your room key on January 10, you may check-in January 14 - 15 between 9am - 10pm. Failure to check-in by 5 pm on January 16 will result in cancellation of the contract.

# Your Community

## YOUR ROOMMATE

We encourage you to call or email your new roommate. Getting in touch will give you a chance to get to know each other. Once you move into your residence hall or apartment, you will complete a roommate agreement with your roommate. Below are a few tips to help you along the way:

- Start the conversation ASAP - Schedule a get-to-know-you discussion and begin to establish boundaries. Even if you already know them well, this is a necessary step.
- Discuss and agree on your expectations - Does your roommate know you hit the snooze button a lot before you wake up? That you're a neat-freak? That you need some time to yourself before talking to anyone after you wake up? Communicating what you need is one of the best ways to eliminate problems before they become problems.
- Discuss your lifestyle and preferred study styles - If your roommate's habits, personality or schedule are very different from yours, it can be hard to adjust to living together.
- Discuss how comfortable you are with guests/visitors.
- Discuss who will bring what for the room.



If you behave politely to your roommate, they are likely to follow your lead. When roommates have conflict, we suggest they talk about the cause of the issue. When roommates are unable to resolve a conflict on their own, a Resident Assistant (RA) is called upon to help. In mediation, an objective person, usually the RA, acts as an intermediary to ensure that strong feelings do not hinder the process and that both sides are represented fairly.

## HOUSING STAFF

**Residence Director:** A full-time professional who lives on site and is responsible for the overall management of the residential operations and providing leadership for staff and students in the residential area. Your RD can provide you with individual counseling, support with roommate conflicts and conduct issues, and referrals to other university services.

**Resident Assistant:** A student staff member who lives in the residential community to serve as the primary resource to the residents for information and assistance. Your RA will help you throughout the year by planning community events, addressing roommate conflicts and answering any general questions you may have.

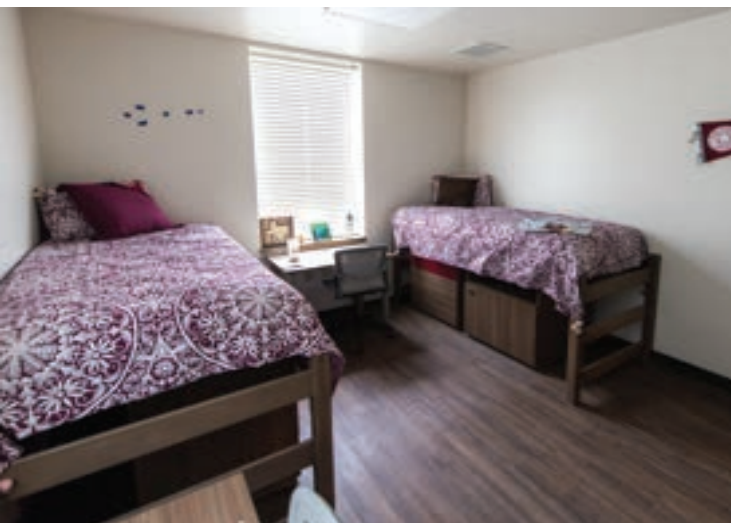
**Academic Support Assistant:** An undergraduate student who has been selected to serve as an academic liaison for residential students. The ASA can assist you with developing academic goals, providing referrals to offices on campus and developing successful ways to manage your courseload.







# Housing Amenities



## WHAT'S IN MY ROOM?

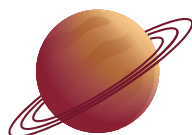
**Parliament Village, Guinn Hall and Stark Hall:** Rooms are furnished with a twin XL bed, desk, chair, dresser and cabinet for each resident. Each unit also includes a microfridge, WiFi and air conditioning.

**Lowry Woods Community:** Rooms are furnished with a full size bed, dresser, desk and chair for each bedroom. Each apartment also includes WiFi, air conditioning, a sofa or love seat, side tables, chairs, stove, dishwasher, microwave and full-size refrigerator. Family housing is unfurnished, except for appliances.



## MAINTENANCE

To submit a work order, visit <http://www.twu.edu/fmc/>. Click on the dropdown menu for "Most Requested Services" and select "Work Orders." Select "Work Request" from the menu on the left side of the page. Complete the "Work Request Form" by filling in all required fields and selecting "Denton Campus" and "Denton Housing" for Facility and Repair Center, then click "Submit."



## RESIDENCE LIFE HANDBOOK



The Residence Life Handbook is designed as an introduction and guide for all residential students at Texas Woman's University and is considered an extension of your Housing & Dining Contract. If you have questions, concerns or suggestions regarding policies, activities and/or services provided by Housing & Dining, please contact any member of our staff or stop by the Housing & Dining Office at Mary's Hall in Parliament Village. For a complete copy of the Residence Life Handbook, visit [www.twu.edu/housing/](http://www.twu.edu/housing/) and look under the "Resources" tab.

## LAUNDRY

Washers and dryers are available free of charge in all residential facilities.



## COMPUTER LAB

No computer? No problem! Computer labs are available in Mary's Hall, the Lowry Woods Community Center and the Guinn/Stark Commons.



# Safety & Security



## SAFETY TIPS

- Lock your doors at all times. Double check the door to ensure it is locked.
- Always use your door viewer before opening your door to visitors, even when you are expecting someone.
- Never prop open any exterior doors.
- Use lockable furniture for important items such as computers, tablets and personal documents.
- Do not leave personal items such as phones, purses or bags alone in public areas, even for a short time.
- Never share your ID with another person. Report lost IDs and keys immediately.
- Avoid letting people you do not know piggy back behind you as you enter your residence hall.
- Avoid walking alone at night. Contact DPS for an escort.
- Text a friend to let them know when you are leaving a location and when to expect you to arrive.
- Educate yourself on the location of emergency call boxes around campus.

## SAFE PROGRAM

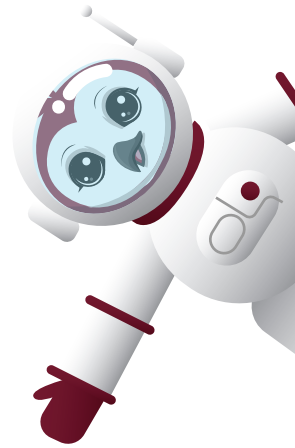
Safes are available on a first-requested, first-served basis free of charge to students living in the residence halls during the 2023-2024 academic year. TWU safes offer durable protection to keep your treasured items secured at all times. The safes are perfect for electronics, spare cash, important documents and anything else that needs to be stored securely. If you are interested in requesting a safe, please email [housing@twu.edu](mailto:housing@twu.edu) to submit a request.

## INSURANCE

While every effort is made to provide a secure environment, the University does not assume responsibility at any time for personal property and is not liable for the loss or damage of any article or personal property anywhere on the premises. We highly encourage our residents to carry appropriate insurance to cover personal property brought to campus. This may be done as a rider to an existing insurance policy or by purchasing separate insurance.

NSSI Student Insurance has created a web page for Texas Woman's University students at: [www.nssi.com/portal/texaswomansuniversity/](http://www.nssi.com/portal/texaswomansuniversity/)

# Dining



## PIONEER KITCHEN

With a new semester around the corner, Pioneer Kitchen is excited to serve you and be your number one stop for breakfast, lunch, and dinner. Follow us on social media to stay in the loop with what's happening at Pioneer Kitchen. We have lots of events and giveaways in store and you don't want to miss out.

Instagram: @\_pioneerkitchen

Twitter: @pioneerkitchen

Facebook: @pioneerkitchenTWU

## GET MOBILE APP

Avoid the lines next semester using our "GET Mobile" app. You can order meals from some of your favorite dining spots on campus and pay using your meal plan or your debit/credit card.

## FIRST MEALS

The Dining Hall will open from 4 to 8 PM on Sunday, January 14 for dinner, and resume normal hours of 10:30 AM to 8 PM on Monday, January 15. Retail dining options on campus will resume operations on Tuesday, January 16.

Visit [www.twu.edu/dining/](http://www.twu.edu/dining/) for details on dining hours.

## CATERING

At Pioneer Kitchen, we love to cater! Pre-order cakes, premium dinners, or even custom cookies on [twu.catertrax.com](http://twu.catertrax.com) to celebrate a birthday or any special occasion with us.

## MEAL PLANS

Have you signed up for a meal plan yet? Meal plans include Dining Hall meal swipes and Dining Dollars, which can be spent at any of the restaurants on campus, or even at The Market. Being on a meal plan provides you with so many benefits. You get to eat at any location conveniently located on campus, which saves you time in between classes. You also get access to exclusive meal deals and you save on taxes with each purchase. Here are the residential meal plans available for those living on campus:

- 10-Meal Plan: 275 dining dollars and 10 Dining Hall meals per week.....\$2,025
- 15-Meal Plan: 275 dining dollars and 15 Dining Hall meals per week.....\$2,275
- Block 100 Meal Plan: 750 dining dollars and 100 meals per semester.....\$2,300



# Dining Locations



Visit [dineoncampus.com/pioneerkitchen/](https://dineoncampus.com/pioneerkitchen/) for hours of operation, menus for our dining locations and much more!

# What to Bring / What to Leave

## BRING IT!

- Face coverings/masks
  - Personal hygiene items
  - First aid kit/thermometer
  - Travel container for your toothbrush
  - Hand sanitizer
  - Disinfectant wipes
  - Toilet paper (except for residents of Parliament Village)
  - Towels (bath & washcloths)
  - Shower curtain (except for residents of Parliament Village)
  - Television
  - Laptop/calculator
  - Ethernet cable for connecting to dataport
  - Broom/dust mop
  - Cleaning products/detergent/fabric softener
  - Laundry bag or basket/lingerie bag
  - Hangers for clothing
  - Plastic bowls/mugs/napkins/paper towels/silverware
  - Comforter/mattress pad/blanket/pillow(s)/pillowcases
  - Small personal fan
  - Coffee maker
  - School supplies
  - Clock radio
  - Flashlight
  - Umbrella
  - Surge protector
- Lowry Woods residents may also bring:
- Cooking utensils\*
  - Toaster\*
  - Electric skillet\*
  - Countertop grill\*



## LEAVE IT

- Landline phones
- Wireless routers
- Concrete blocks or bricks
- Bed risers
- Candles/plug-ins
- Incense/wax warmers
- Pets (exception – small fish)
- Halogen lamps
- Space heaters
- Multi plug converter/extension cords
- Large refrigerators
- Cooking appliances\*
- Toaster\*
- Electric skillet\*
- George Foreman type grills\*
- Any appliance with exposed heating elements

Items denoted with an asterisk (\*) are allowed in Lowry Woods Community.





# ✦ Frequently Asked Questions

## Where do I go on move-in day?

Go directly to the building/residence hall to which you were assigned. Residence hall staff will be at your building to welcome you when you arrive.

## Can I bring my bicycle?

Yes. Members of the TWU community may register their bicycles with TWU DPS. Individuals are encouraged to take advantage of this free service, which assists the department in its efforts toward the prevention and recovery of stolen bicycles.

## As a parent/relative/friend who assisted with moving in, can I spend the night in my student's residence hall?

We ask that any guests of the student on move-in day make other arrangements after the move. A list of area hotels has been provided for your convenience at [www.twu.edu/orientation/parent-and-family-orientation/preferred-hotels/](http://www.twu.edu/orientation/parent-and-family-orientation/preferred-hotels/)

## Can I bring my pet?

✦ It is prohibited to bring dogs, cats or other pets (except small fish; see the Residence Life Handbook for more information) inside any university-controlled buildings with the exception of approved service and/ or emotional support animals. All emotional support animals must be approved by the Disability Services for Students Office before they can move in.

## How do I pay my housing bill?

✦ Payments for housing or dining balances can be made in person at the Bursar's Office on the Denton campus or online through the TWU Online Payment System. All prior term balances must be paid in full in order to register for a future term.

## How do I move my belongings?

✦ Students are responsible for moving their own belongings. Moving carts and dollies will be provided at your residence hall.

## How do I get a parking permit?

A parking permit can be purchased online or in person from the TWU Parking Office. Complete parking rules and regulations, as well as the online ordering form, can be found at [www.twu.edu/parking/](http://www.twu.edu/parking/).

## What will I be expected to do after I move in?

✦ Starting Tuesday, January 16, Maroon Madness kicks off with two weeks of events for students to enjoy as they start a new semester. For the full Maroon Madness schedule, please visit: <https://www.twu.edu/orientation/first-year-orientation/pioneer-camp/maroon-madness-schedule/> in mid January. If you have any additional questions, please contact the Office of Housing & Dining at [housing@twu.edu](mailto:housing@twu.edu) or by calling 940.898.3676 ✦

