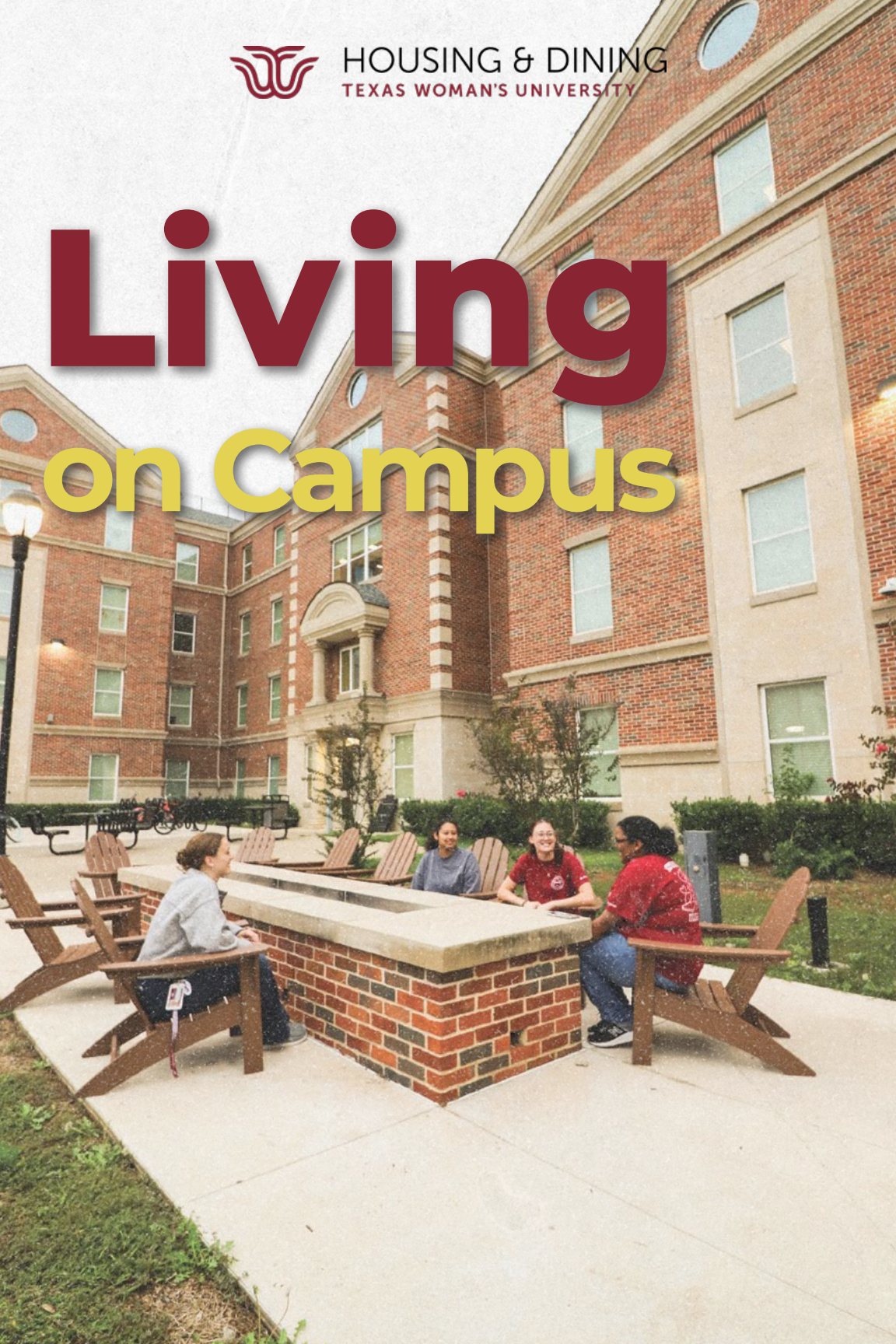




HOUSING & DINING  
TEXAS WOMAN'S UNIVERSITY

# Living on Campus







# Welcome, Pioneer!

Living on campus is a great way to make the most of your college experience, and here at Texas Woman's University Housing & Dining we are excited to help you make the transition to one of our residential communities. You can avoid the commute while being at the center of campus life as a residential student, living just minutes away from your classes, dining options, academic support and social events. By creating a safe, dynamic, compassionate community that supports your academic success, personal development and engagement, our team helps students develop that Pioneering spirit. Take the first step on your journey to becoming a Pioneer and learn more about TWU Housing & Dining.

## 10 reasons why you should live on campus

### Live Connected.



Residential students have a stronger connection to the campus community.

### Live in the Heart.



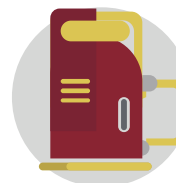
Get the whole TWU experience.

### Live Worry Free.



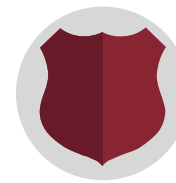
WiFi, utilities and laundry are all included.

### Live Close.



This means sleep more, drive less and save gas!

### Live Secure.



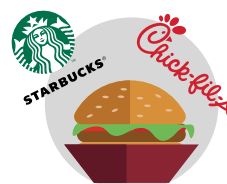
Safety and security are a priority! Card access, cameras, TWU Police and hall staff available 24/7.

### Live Together.



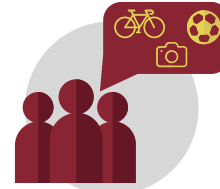
Match with a roommate in a community of your peers.

### Live Convenient.



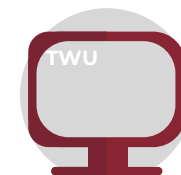
Enjoy dining options that suit your taste and lifestyles all within walking distance of your residential community.

### Live Involved.



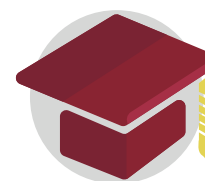
Follow your interests, join organizations, take part in service or job opportunities.

### Live Supported.



Live-in hall staff, 24-hour computer labs and easy access to academic resources.

### Live Successful.



Students who live on campus have higher GPAs, take more hours and are more likely to graduate.



# Residency Requirements

All full-time undergraduate students with fewer than 60 credit hours are required to live on campus while attending Texas Woman's University. The on-campus experience helps students connect with their community, access resources and find success, both in and out of the classroom.

For more information about the residency requirement, see [www.twu.edu/housing](http://www.twu.edu/housing).

## Live & thrive on campus!

### You are required to live on campus unless one of the following applies:

- Students 21 years of age or older.
- Active-duty military or veterans of military service.
- Students living with parents or legal guardians within 40 miles commuting distance.
- Students who are legally married or living with legally dependent children (although family housing and daycare services are available).



## How To Apply

After you have been accepted to Texas Woman's University and created a Pioneer Portal account, you can view and complete the housing application and license at [twu.edu/housing](http://twu.edu/housing).

The housing application and license will be available in late fall prior to the academic year you will start at Texas Woman's University. Applying early gives you the opportunity to match with a roommate of your choice and live in the ideal community. Only students who apply by April 1 are guaranteed their roommate preference.

During the application process, first-year students have the opportunity to sign up for a Living Learning Community, which will determine where they will be housed in our residence halls. Spaces are limited and fill quickly, so apply early (see Page 11 for more information about Living Learning Communities).

Monitor your [TWU.edu](http://TWU.edu) email address for communications from Housing & Dining regarding your license and room selection.

## Housing & Dining Checklist

- ☐ Apply for admission to Texas Woman's University.
- ☐ Create a Pioneer Portal account.
- ☐ Review Housing & Dining options at [twu.edu/housing](http://twu.edu/housing).
- ☐ Apply for housing beginning in late fall and pay the \$150 application fee and deposit (fees subject to change).
- ☐ Select an LLC to join. For more information, see *Page 11*.
- ☐ Complete your roommate profile in the housing portal and find your preferred roommate.
- ☐ Receive your room assignment and select your meal plan beginning in May.
- ☐ Contact your future roommate.
- ☐ Watch your TWU.edu email address for housing assignment and move-in details.
- ☐ Shop for room décor and supplies.
- ☐ Move-In!



# Campus Life

Texas Woman's University and Housing & Dining provide a number of events and activities to promote engagement with the university community and give students an opportunity to develop themselves both academically and socially. In addition to campus-wide events, residence hall and community staff members prepare unique programming and events for students in their halls. Keeping you connected with your community is a priority of Housing & Dining, so make sure to join in the fun!



## Annual Events:

- **Bingo:** The first night of each semester the Residence Hall Association hosts this event with amazing prizes!
- **Block Party:** The university's semester-opening celebration and resource fair.
- **Pack the House:** A collaborative event between Housing & Dining and Athletics for residential students.
- **Plan It Party:** Start the semester right with the Academic Support Office by creatively mapping out your schedule while winning prizes and meeting others in your classes.
- **Finals Feast:** Fuel up in preparation for finals with free food and activities.
- **Pioneer Palooza:** TWU's spring celebration for all students!
- **And much, much more!**  
Find details about all upcoming events at [twu.edu/calendar](https://twu.edu/calendar).



## Get Involved

**RESIDENCE HALL ASSOCIATION:** All residential students at Texas Woman's University have the ability to make their voices heard by getting involved with the Residence Hall Association (RHA). RHA is the student organization that not only plans events, but also voices residential concerns and serves as a liaison between students living on campus and the administration of Housing & Dining. Any student living on campus receives automatic membership and is encouraged to attend meetings to discuss any improvements or ideas they have concerning life in their residence hall or community. In the spring, residents in good standing are eligible to run as officers of the RHA Executive Board. More information can be found at [twu.edu/housing/resources/residence-hall-association-rha](https://twu.edu/housing/resources/residence-hall-association-rha).

**COMMUNITY INTERNS:** Community Interns lead within each residence hall, and positions are open to residents who seek to be leaders in their community. Community Interns work with the Residence Hall Association to voice concerns and provide programming and events throughout the year for their residence hall or community. Community Interns are recruited and selected during the summer before the fall semester.





# Parliament Village

Parliament Village is the University's premier residential community for first-year students. Spread out over North Hall, South Hall and Mary's Hall, Parliament Village features double- and single- occupancy rooms with community restrooms on each floor and wing. Each room is furnished with an XL twin bed, desk, chair and closet for each resident, and includes a combination microwave-refrigerator.

Programs and personnel in Parliament Village are designed to focus on creating communities in the village. With two resident assistants per floor and full-time staff living and working in the halls, assistance is always available for students looking to participate in counseling sessions, advising sessions and career preparation. Residents of Parliament Village also have easy access to the Housing & Dining main office in Mary's Hall, as well as the Dining Hall and Pioneer Hall.



## Parliament Village Amenities:

- Study & community lounges throughout the community
- Free in-hall laundry
- Computer lab
- Maker's space
- Fitness room
- Community kitchens in each building
- Outdoor fireplace & hammock stands
- WiFi
- Convenient access to the Dining Hall



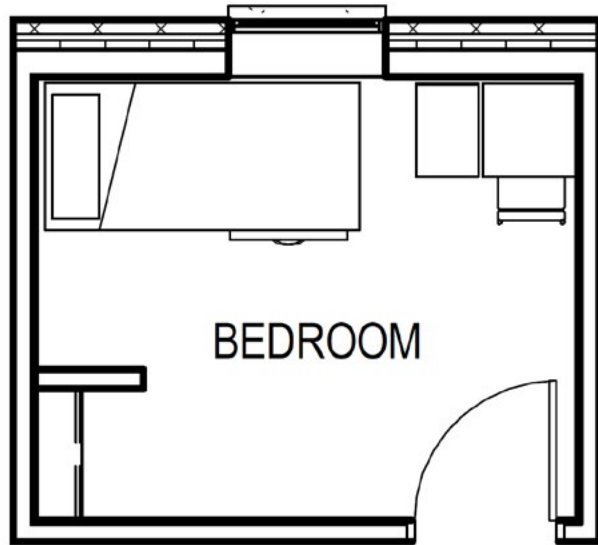
## Academic Support Office

The Academic Support Office (ASO), located inside the computer Lab in Mary's Hall, is your in-house resource for assistance with academic success. The office is staffed with both Academic Support Assistants and Academic Support Tutors all ready to assist you with areas of academic transition, time management, study skills, resource navigation and much more. You can connect with them through one-on-one academic mentoring during office hours, by visiting our Mobile ASO table in the residence halls, or by attending one of our academic programs.



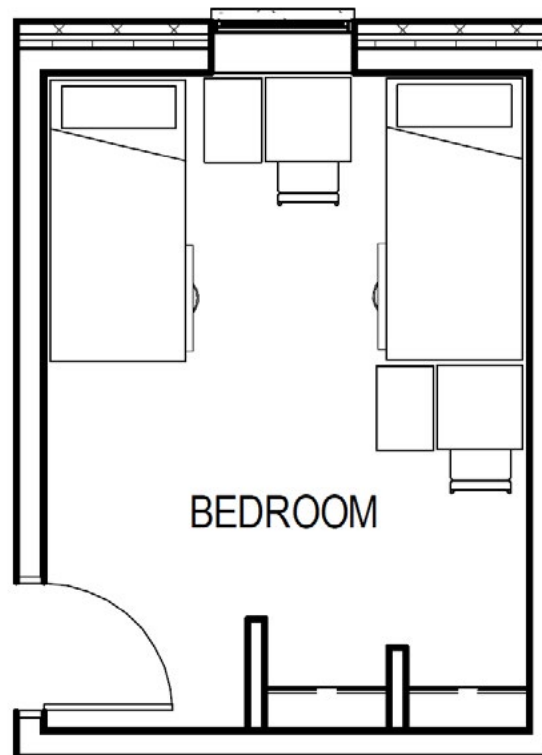


# Parliament Village Floor Plans



Single

Double



## Living Learning Communities

Discover the benefits of living and learning with peers who share your academic interests. Experience the joy of sharing in activities that help you grow as a student and as an individual. Enrich your first-year experience by taking part in a Living Learning Community (LLC). Texas Woman's University hosts two learning connections: College Connections and Pioneer Connections. You will have the opportunity to take part in special activities while meeting new people and living in an inclusive and supportive environment on campus. Check out your options and determine which LLC is right for you.

**College Connections:** Arts, Business, Professional Education, Psychology Majors, Health Professions Majors

**Pioneer Connections:** Honors, President's Leadership Council (PLC), Legacy Leaders, Texas Leadership Scholars and Terry Scholars

More information about Living Learning Communities at TWU can be found at [twu.edu/housing/living-learning-communities](https://twu.edu/housing/living-learning-communities). Spaces are limited, so apply by May 1 to guarantee your placement.



# GuinnHall

Located at the north end of campus adjacent to Stark Hall, Guinn Hall stands 24 stories high and provides stunning views of the Denton skyline. Guinn Hall is a co-educational residence hall with double- and single- occupancy rooms. TWU athletic teams are housed in Guinn Hall. The primary Academic Support Office is located here on the first floor and offers the same services as described on page 9.

## Guinn & Stark Hall Amenities:

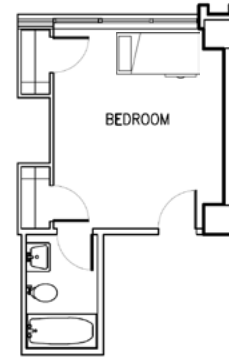
- XL twin bed, dresser, desk, chair & closet for each resident
- Private bath in room
- Microwave-fridge combo in each room
- Free in-hall laundry
- 24/7 Computer lab
- On-site convenience store
- Wi-Fi

# StarkHall

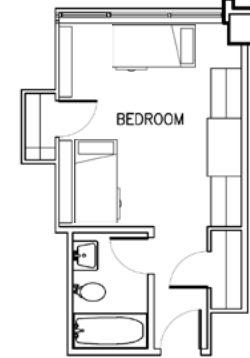
Next to Guinn Hall and connected via the Guinn/Stark Commons, Stark Hall is the university's oldest residence hall. Stark Hall is a 21-story co-educational residence with double- and single-occupancy rooms and is home to TWU's sorority chapter rooms.

Both Stark and Guinn Halls are conveniently located near the Blagg-Huey Library, Fitness and Recreation, Pioneer Hall and the Dining Hall.

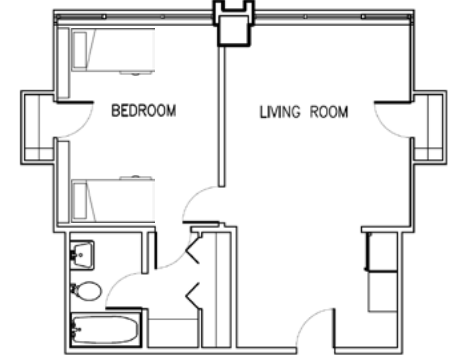
# Guinn & Stark Hall Floor Plans



Guinn: Single



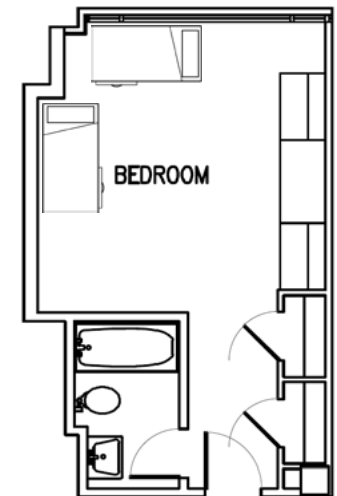
Guinn: Double



Guinn: Deluxe Double



Guinn: Triple



Stark: Double







## Lowry Woods

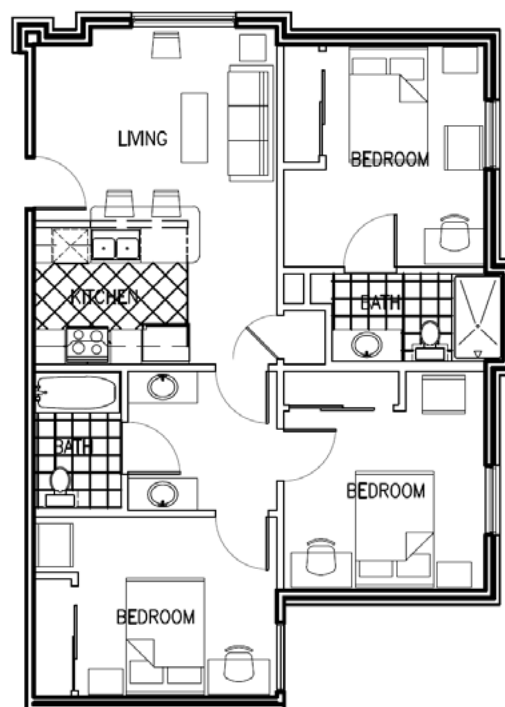
# Floor Plans

## Lowry Woods

Upper-level students can choose to live in Lowry Woods, a large 7-building apartment-style residential community on the northwest corner of campus. Residents occupy a single- bedroom in a two- or three-bedroom unit. Each unit features a fully-furnished living room and kitchen, and each bedroom includes a full bed, desk, chair, dresser and closet.

### Lowry Woods Amenities:

- Free laundry room in each apartment building
- Computer lab
- Community Center
- Front desk service
- Nearby parking
- Dining Dollars included in rent
- Wi-Fi



3 Bed / 2 Bath

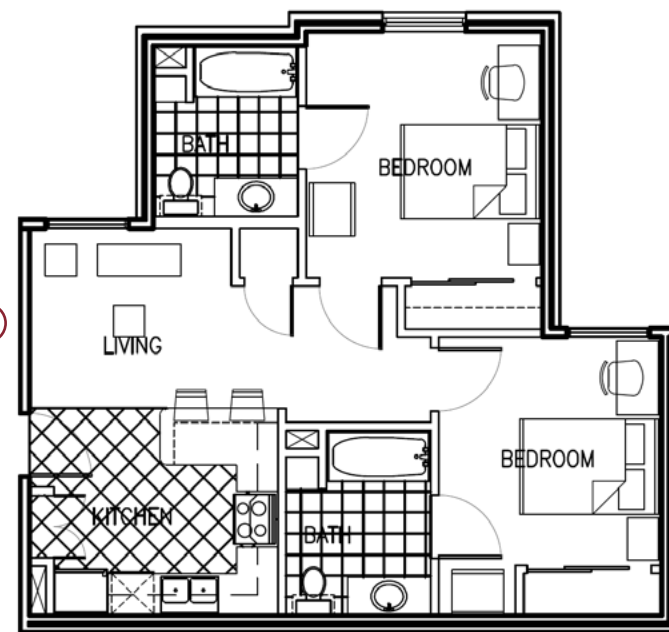
## FAMILY HOUSING & THE CLUBHOUSE

Lowry Woods is also home to the university's family housing. Any legally married couple, with or without children, or any single parent with legal custody of one child or more is eligible to live in family housing as long as they maintain 12 or more credit hours per semester.

The Clubhouse is an educational enrichment program through Housing & Dining for children ages 5-12 operating out of the Lowry Woods Community Center. Children participating in Clubhouse programs will have the opportunity to take part in reading projects, arts and crafts, field trips, community service and much more.

More information about these programs can be found at [twu.edu/housing/family-housing](http://twu.edu/housing/family-housing).

**Please note: Family housing does not include furnishings.**



2 Bed / 2 Bath



# Off-Campus Housing

TWU Housing is in high demand! Through a partnership with designated apartment complexes near campus, TWU is able to meet the housing needs of our juniors, seniors, and graduate students. Our upperclassmen students enjoy the connection to TWU while having the flexibility of apartment-living off-campus. Housing & Dining manages your license meaning your housing expenses are part of your TWU student account and eligible for financial aid. Sign your license with TWU Housing & Dining and reside in a furnished private bedroom within a two-, three-, or four-bedroom unit.

[twu.edu/housing/twu-off-campus-housing](http://twu.edu/housing/twu-off-campus-housing)

## TWU Off-Campus Amenities:

- In-unit laundry
- 24/7 Community Center with printing and package room
- Free registered parking



- Free shuttle service to TWU
- TWU roommates
- Pool
- Pets permitted via registration
- Wi-Fi
- Private bathrooms



# Dining On Campus

Students who live in Guinn Hall, Stark Hall, and Parliament Village are required to purchase a residential meal plan. Our dining provider, Pioneer Kitchen, offers a variety of dining options to students at Texas Woman's University. Designed with the needs of students in mind, dining on campus is convenient and accessible while catering to students' lifestyles, dietary restrictions and health needs. Pioneer Kitchen also hosts a variety of food-focused events for students throughout the year, as well as catering services and access to a registered dietician. Menus and hours of operation can be found at [dineoncampus.com/pioneerkitchen](http://dineoncampus.com/pioneerkitchen).

**DINING HALL** TWU's Dining Hall includes seating for over 600 students and offers multiple meal stations to satisfy a number of tastes and dietary restrictions. Located a short distance from Parliament Village, Guinn Hall and Stark Hall, this state-of-the-art dining hall is open for breakfast, lunch and dinner for students and their guests.

**DINING OPTIONS** In addition to the university's Dining Hall, retail dining options on campus include Starbucks, Chick-fil-A, Mondo Subs, Hera's Kitchen and more. All food-service providers throughout campus accept Dining Dollars. A variety of dining options are available every day of the week!





# Understanding Your Meal Plan

Meal plans at Texas Woman's University are designed to fit the budgets and lifestyles of our students. Multiple meal plan options are available to TWU students and include meals per week and Dining Dollars, which can be used in the Dining Hall or any of the restaurants and cafes around campus.

## ► How do my “Meals Per Week” Work?

Each meal plan includes a varying number of “meal swipes.” Meal swipes are loaded onto your TWU ID card and are used each time you enter the Dining Hall. Your meals per week begin on Saturday and end on Friday. Unused meal swipes do not carry over to the next week, so be sure to use them all.

## ► What are Dining Dollars?

Dining Dollars are a currency loaded on your TWU ID. Each meal plan includes Dining Dollars, which can be used at retail dining locations throughout campus, such as Chick-fil-A, Starbucks, The Market or Hera's Kitchen. Unused Dining Dollars carry over from the fall to the spring semester and expire at the end of the spring semester. Keep track of your Dining Dollars and load extra when you need it by downloading the GET Mobile App or visiting [twu.edu/dining](http://twu.edu/dining).



## Meal Plans

- 10-Meal Plan with \$300 Dining Dollars
- 15-Meal Plan with \$300 Dining Dollars
- Block 100 Meal Plan with \$750 Dining Dollars

# Dining on Campus [twu.edu/dining](http://twu.edu/dining)

