

COVID EXPOSURE PROTOCOLS



Potentially Exposed to COVID-19

Fully Vaccinated ¹

Not Fully Vaccinated ²

No Symptoms

Symptoms or Positive Test

No Symptoms

SELF-MONITOR

- No formal quarantine
- Strongly recommend mask wearing for 10 days
- Testing on 5th day post-exposure recommended

ISOLATE

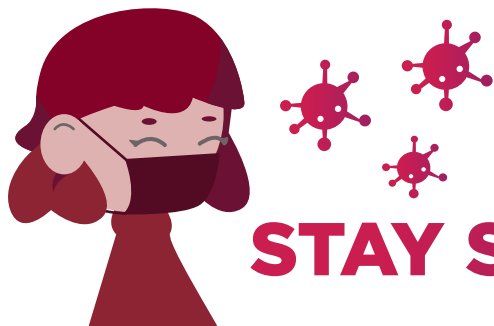
- Stay home!
- Complete [TWU COVID-19 Reporting Form](#) if you have been on campus within past 5 days and have tested positive
- Isolate at least 5 days after symptoms appear or after date of positive test
- Strongly recommend mask wearing for 5 days after clearance

QUARANTINE

- Stay home!
- Complete [TWU COVID-19 Reporting Form](#) if you reside and plan to quarantine on-campus
- Quarantine at least 5 days after exposure
- Strongly recommend mask wearing for 5 days after clearance
- Testing on 5th day post-exposure recommended

¹ Within six months for the second Pfizer and Moderna vaccination, within two months for the Johnson & Johnson vaccination, have received booster shot, or have had a confirmed diagnosis of COVID-19 in the last 90 days

² Unvaccinated, incomplete two-dose vaccination series, or more than six months since the second Pfizer or Moderna vaccine dose, more than 2 months since the Johnson & Johnson vaccine dose, and not yet boosted



STAY SAFE